

LOC I-POC <b>110.5</b>	APP CRS <b>259°</b>	Rwy Idg TDZE Apt Elev	<b>4151</b> <b>1005</b> <b>1014</b>
---------------------------	------------------------	-----------------------------	---

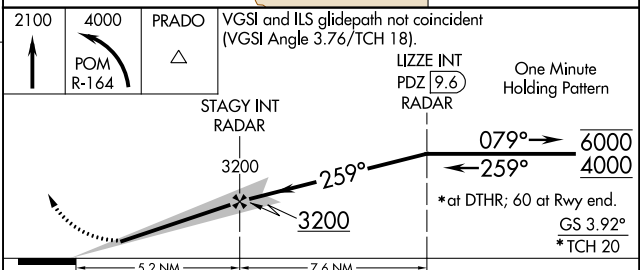
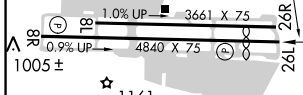
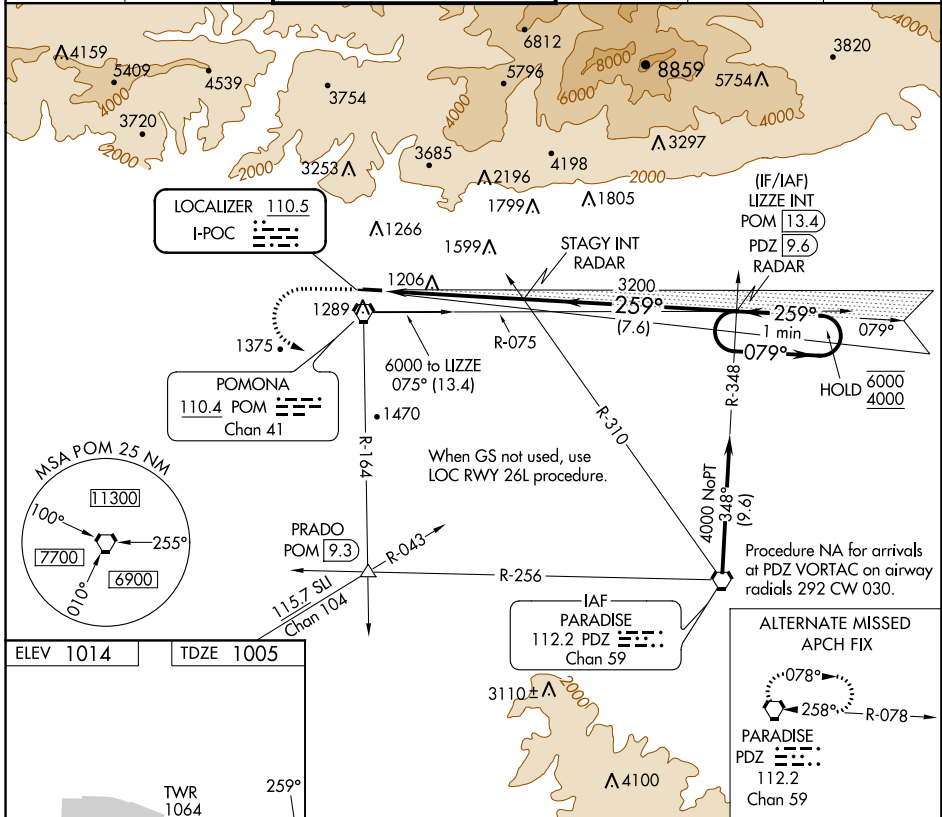
# ILS RWY 26L

BRACKETT FIELD (POC)

**▼** Rwy 26L helicopter visibility reduction below 3/4 SM NA.  
**▲** When local altimeter setting not received, use Ontario Intl altimeter setting and increase DA to 1364.

MISSED APPROACH: Climb to 2100 then climbing left turn to 4000 on POM VORTAC R-164 to PRADO INT/POM 9.3 DME.

ATIS <b>124.4</b>	SOCAL APP CON <b>125.5 318.2</b>	BRACKETT TOWER★ RWY 8R/26L <b>118.2</b> (CTAF)	RWY 8L/26R <b>133.3</b>	GND CON <b>125.0</b>	CLNC DEL <b>121.875</b>	UNICOM <b>122.95</b>
----------------------	-------------------------------------	--	----------------------------	-------------------------	----------------------------	-------------------------



ELEV 1014	TDZE 1005	TWR 1064	3661 X 75	259°
1005±	1161	1.0% UP	4840 X 75	26.1
2100	4000	PRADO	VGSI and ILS glidepath not coincident (VGSI Angle 3.76/TCH 18).	ILS INT PDZ 9.6 RADAR
▲	POM R-164	▲	STAGY INT RADAR	One Minute Holding Pattern
3200	3200	3200	3200	079° → 6000
3200	3200	3200	3200	← 259° 4000
5.2 NM	7.6 NM			*at DTHR; 60 at Rwy end.
				GS 3.92°
				*TCH 20
CATEGORY	A	B	C	D
S-ILS 26L	1332-1	327 (400-1)		NA

SW-3, 21 MAY 2020 to 18 JUN 2020

SW-3, 21 MAY 2020 to 18 JUN 2020