

| | | | |
|-------------------------|------------------------|----------------------------|-------------|
| WAAS CH 58141 | APP CRS 230° | Rwy Idg TDZE 182 | 5501 |
| W23A | | Apt Elev 182 | |

RNAV (GPS) RWY 23

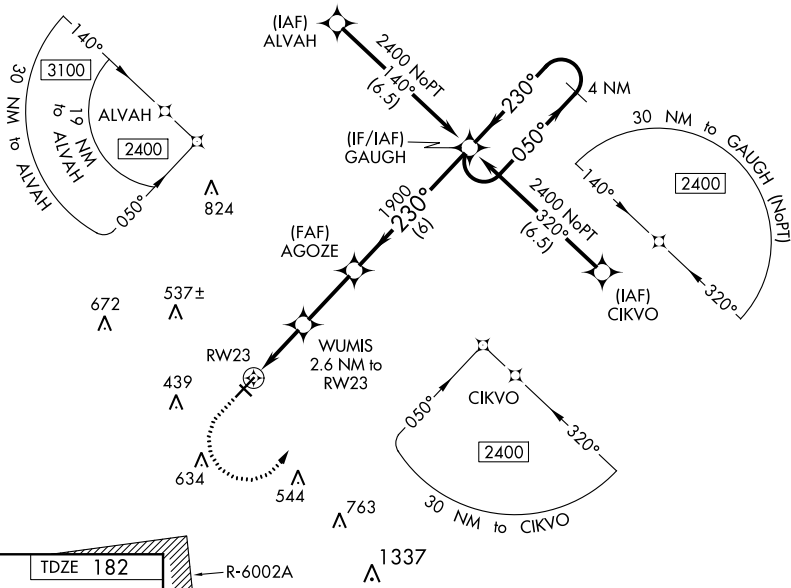
SUMTER (SMS)

⚠ Circling NA to Rwy's 14 and 32. For uncompensated Baro-VNAV systems, LNAV/VNAV NA below -1.5°C (5°F) or above 54°C (130°F). Baro-VNAV and VDP NA when using Camden altimeter setting. DME/DME RNP-0.3 NA. Inop table does not apply to LPV all Cats. When local altimeter setting not received, use Camden altimeter setting: increase LPV DA to 445 feet; increase LNAV/VNAV DA to 523 and all visibilities ½ SM; increase all MDA 80 feet and visibility Cat C and D ¼ SM. For inop ALS, when using Camden altimeter setting, increase LPV Cat A and B visibility to ⅔ SM; increase LNAV/VNAV Cat C and D to 1 SM; increase LNAV Cat C and D to 1¼ SM.



MISSED APPROACH:
Climb to 600 then climbing left turn to 2400 direct GAUGH and hold.

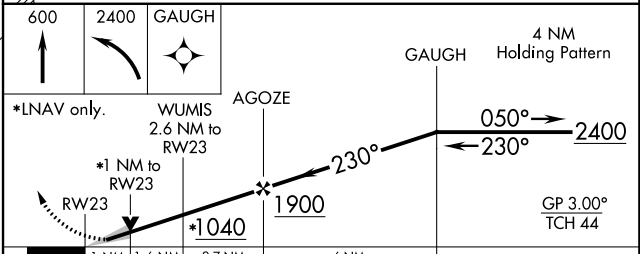
| | | |
|--------------------------|-------------------------------|---------------------------------|
| AWOS-3 118.075 | SHAW APP CON★ 125.4 | UNICOM 122.7 (CTAF) 0 |
|--------------------------|-------------------------------|---------------------------------|



SE-2, 21 MAY 2020 to 18 JUN 2020

SE-2, 21 MAY 2020 to 18 JUN 2020

| | |
|----------|----------|
| ELEV 182 | TDZE 182 |
|----------|----------|



| CATEGORY | A | B | C | D |
|-------------------|----------------------|----------------------|-------------------------|-------------------------|
| LPV DA | | 382-¾ | 200 (200-¾) | |
| LNAV/VNAV DA | | 460-¾ | 278 (300-¾) | |
| LNAV MDA | 540-¾ | 358 (400-¾) | 540-⅞ | 358 (400-⅞) |
| C CIRCLING | 600-1 418 (500-1) | 640-1 458 (500-1) | 1000-2½ 818 (900-2½) | 1000-2¾ 818 (900-2¾) |

MIRL Rwy 5-23 0
REIL Rwy's 5 and 23 0