

NDB SMS 252	APP CRS 217°	Rwy Idg TDZE Apt Elev	5501 182 182
-----------------------	------------------------	-----------------------------	---

NDB RWY 23

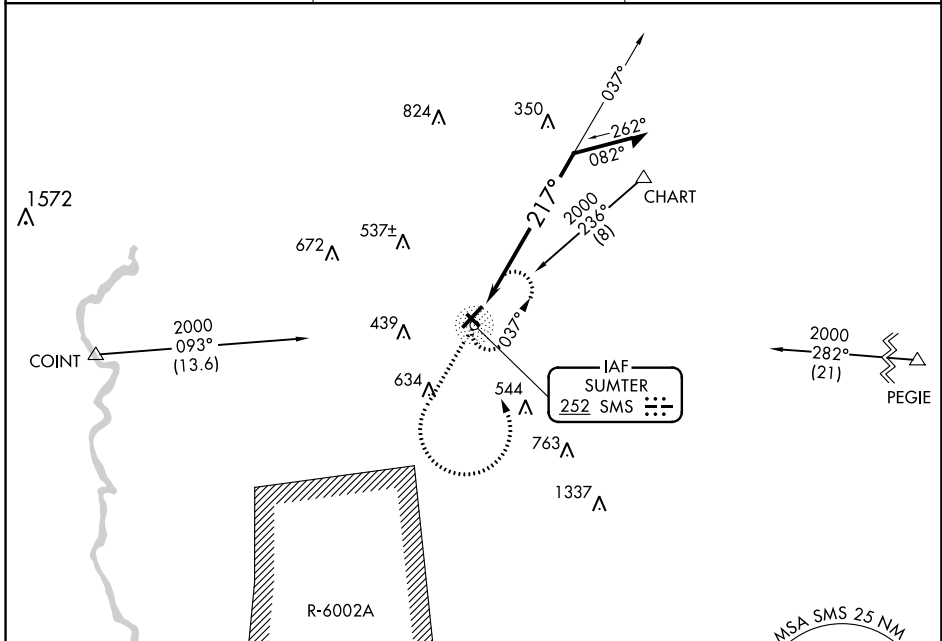
SUMTER (SMS)

⚠ Inoperative table does not apply to S-23 Cat C. Procedure NA when R-6002A is active. Circling NA to Rwy 14-32. When local altimeter setting not received, use Camden altimeter setting and increase all MDA 80 feet.

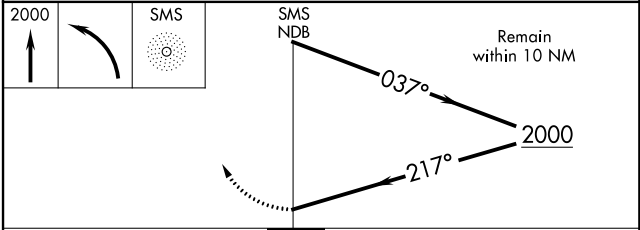
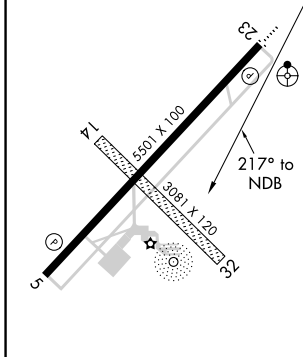
ODALS

MISSED APPROACH: Climb to 2000 then climbing left turn direct SMS NDB and hold.

AWOS-3 118.075	SHAW APP CON ★ 125.4	UNICOM 122.7 (CTAF)
--------------------------	--------------------------------	-------------------------------



ELEV 182	TDZE 182
----------	----------



CATEGORY	A	B	C	D
S-23	700-3/4 518 (600-3/4)	700-1 518 (600-1)	700-1 1/2 518 (600-1 1/2)	700-1 3/4 518 (600-1 3/4)
CIRCLING	700-1 518 (600-1)	700-1 518 (600-1)	700-1 1/2 518 (600-1 1/2)	760-2 578 (600-2)

SE-2, 21 MAY 2020 to 18 JUN 2020

SE-2, 21 MAY 2020 to 18 JUN 2020