

LOC/DME I-SMS 109.35 Chan 30 (Y)	APP CRS 230°	Rwy Idg 5501 TDZE 182 Apt Elev 182
--	-----------------	---

# ILS or LOC RWY 23

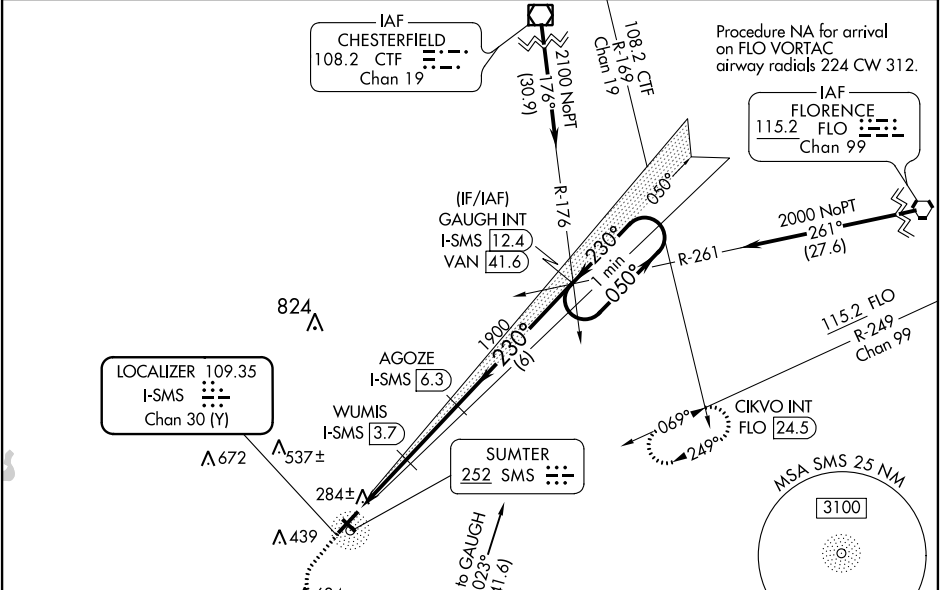
SUMTER (SMS)

▼ Circling NA to Rwy's 14 and 32. DME required. VDP NA when using Camden altimeter setting. Inop table does not apply to S-ILS 23 all Cats.  
▲ When local altimeter setting not received, use Camden altimeter setting: increase DA to 445 feet; increase all MDA 80 feet and visibility Cat C and D ¼ SM. For inop ALS, when using Camden altimeter setting, increase S-ILS 23 Cat A and B visibility to ¾ SM; increase S-LOC 23 Cat C and D to 1¼ SM.



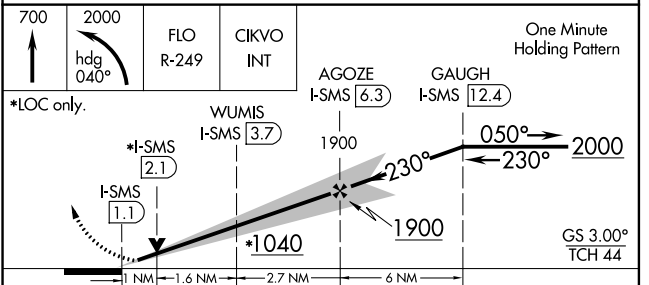
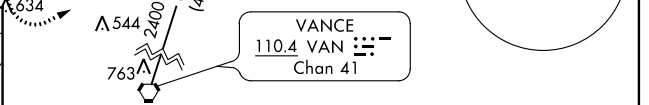
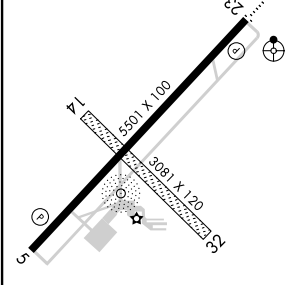
**MISSED APPROACH:** Climb to 700 then climbing left turn to 2000 on heading 040° and FLO VORTAC R-249 to CIKVO INT/FLO 24.5 DME and hold.

AWOS-3 <b>118.075</b>	SHAW APP CON * <b>125.4</b>	UNICOM <b>122.7 (CTAF) 0</b>
--------------------------	--------------------------------	---------------------------------



ELEV 182	TDZE 182
----------	----------

230° 5.3 NM from FAF



CATEGORY	A	B	C	D
S-ILS 23	382-¾ 200 (200-¾)			
S-LOC 23	540-¾ 358 (400-¾)	540-⅞ 358 (400-⅞)		
<input checked="" type="checkbox"/> CIRCLING	600-1 418 (500-1)	640-1 458 (500-1)	1000-2½ 818 (900-2½)	1000-2¾ 818 (900-2¾)

MIRL Rwy 5-23 0  
REIL Rwy's 5 and 23 0

SE-2, 21 MAY 2020 to 18 JUN 2020

SE-2, 21 MAY 2020 to 18 JUN 2020