

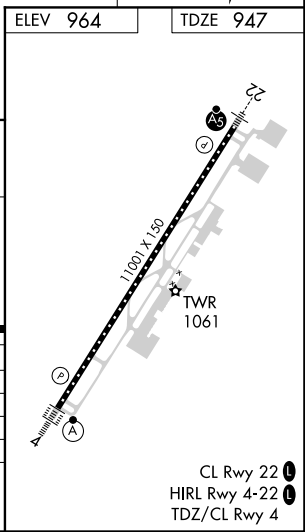
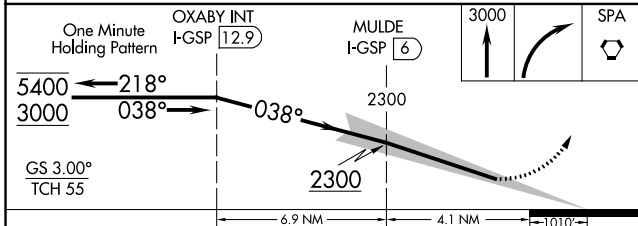
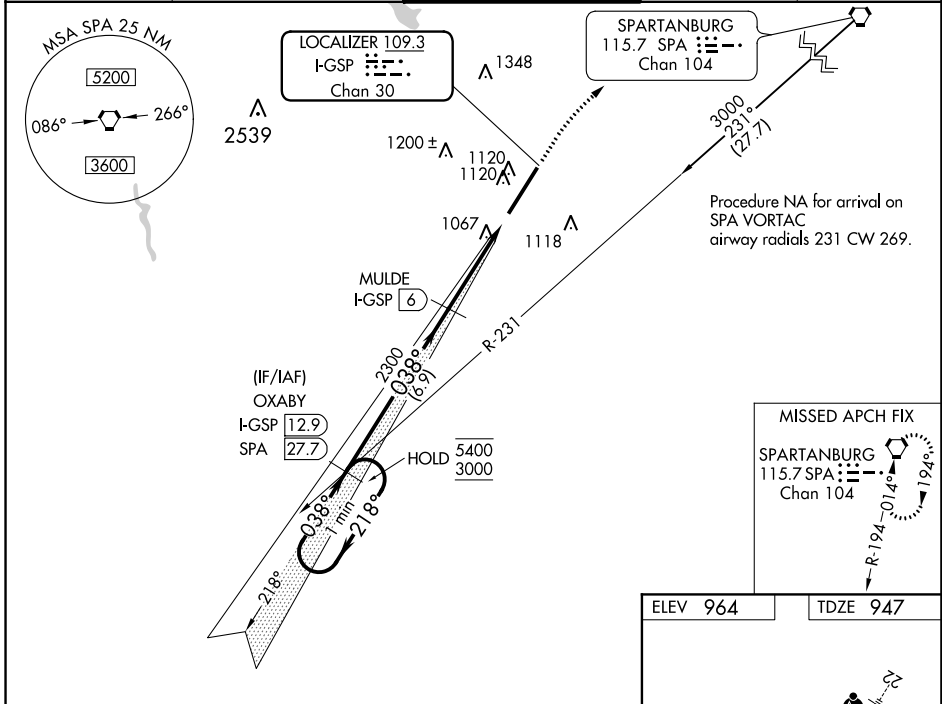
LOC/DME I-GSP 109.3 Chan 30	APP CRS 038°	Rwy Idg 11001 TDZE 947 Apt Elev 964
------------------------------------------	------------------------	----------------------------------------------------------------

ILS RWY 4 (CAT II & III)

GREENVILLE SPARTANBURG INTL (GSP)

DME required.	ALS-F-2	MISSED APPROACH: Climb to 3000 then right turn direct SPA VORTAC and hold.
CAT II: RVR 1000 authorized with specific OPSPEC, MSPEC, or LOA approval and use of autoland or HUD to touchdown. Procedure NA when control tower closed.		

ATIS 134.25	GREER APP CON ★ 118.8 270.275	GREER TOWER ★ 120.1 (CTAF) 251.15	GND CON 121.9	UNICOM 122.95
-----------------------	-----------------------------------------	---------------------------------------------	-------------------------	-------------------------



CATEGORY	A	B	C	D
S-ILS 4	CAT II RA 142/12 100 DA 1047			
S-ILS 4	CAT IIIa RVR 07			
S-ILS 4	CAT IIIb RVR 06			
S-ILS 4	CAT IIIc NA			

CATEGORY II & III ILS - SPECIAL AIRCREW & AIRCRAFT CERTIFICATION REQUIRED

SE-2, 21 MAY 2020 to 18 JUN 2020

SE-2, 21 MAY 2020 to 18 JUN 2020