

LOC/DME I-ESC 109.3 Chan 30	APP CRS 094°	Rwy Idg TDZE Apt Elev	6498 609 609
--	------------------------	-----------------------------	---

ILS or LOC RWY 9

DELTA COUNTY (E/SC)

ADF or DME required. Night landing: Rwy 19 NA. When local altimeter setting not received, use Marquette altimeter setting and increase all DA 178 feet and all MDA 180 feet, increase S-ILS 9 all Cats visibility 1/8 mile, S-LOC 9 Cats C/D visibility 1/2 mile, Circling Cats C visibility 1/2 mile and Circling Cat D visibility 1/4 mile. For inoperative MALSRL when using Marquette altimeter setting, increase S-ILS 9 all Cats visibility to 1 mile, and S-LOC 9 Cats C/D visibility to 2 miles.

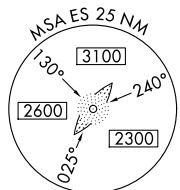


MISSED APPROACH: Climb to 2100 then climbing right turn to 2500 direct ESC VOR/DME and hold.

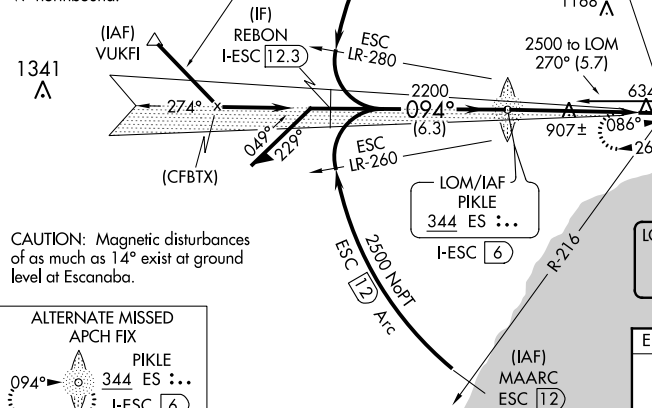
AWOS-3PT
121.425

MINNEAPOLIS CENTER
127.65

UNICOM
122.8 (CTAF)



Procedure NA for arrivals at VUKFI on V7 northbound.



ADF or DME REQUIRED

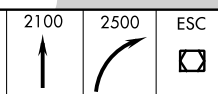
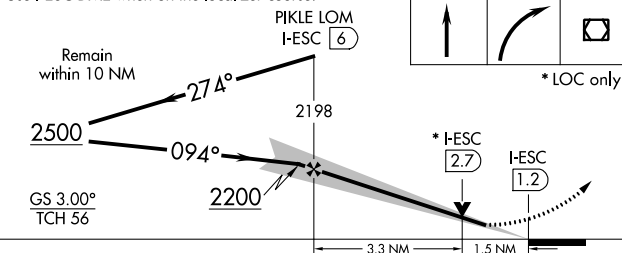
ESCANABA
110.8 ESC : : : :
Chan 45

LOCALIZER **109.3**
I-ESC : : : :
Chan 30

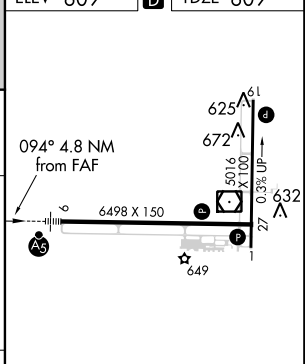
CAUTION: Magnetic disturbances of as much as 14° exist at ground level at Escanaba.



Use I-ESC DME when on the localizer.



ELEV 609 TDZE 609



CATEGORY	A	B	C	D
S-ILS 9		809-1/2	200 (200-1/2)	
S-LOC 9	1160-1/2	551 (600-1/2)	1160-1 1/8	551 (600-1 1/8)
CIRCLING	1160-1	551 (600-1)	1280-2 671 (700-2)	1480-2 3/4 871 (900-2 3/4)

HIRL Rwy 9-27	
MIRL Rwy 1-19	
REIL Rwy 1 and 27	
FAF to MAP 4.8 NM	
Knots	60 90 120 150 180
Min:Sec	4:48 3:12 2:24 1:55 1:36

EC-1, 21 MAY 2020 to 18 JUN 2020

EC-1, 21 MAY 2020 to 18 JUN 2020