

VOR/DME AZO <b>109.0</b> Chan <b>27</b>	APP CRS <b>187°</b>	Rwy Idg TDZE Apt Elev	<b>N/A</b> <b>N/A</b> <b>824</b>
---	------------------------	-----------------------------	--

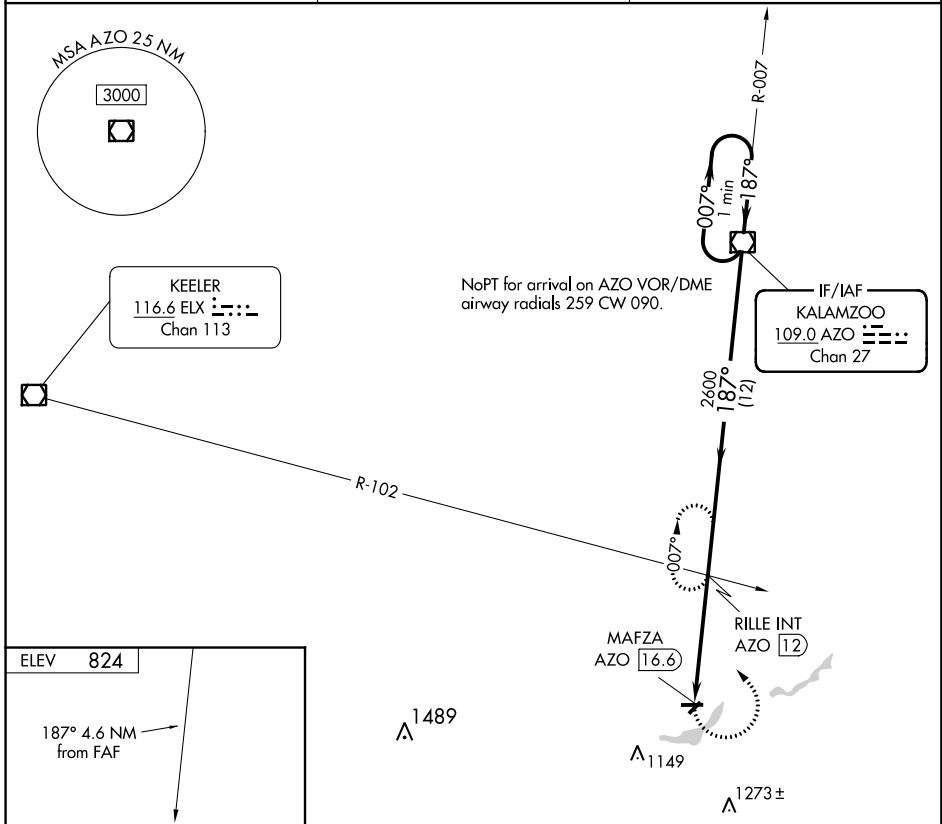
# VOR-A

THREE RIVERS MUNI DR HAINES (HAI)

**⚠** When local altimeter setting not received, use South Bend altimeter setting and increase all MDA 100 feet, and increase Cat C visibility 1/2 mile. Procedure NA at night. Helicopter visibility reduction below 1 SM NA.

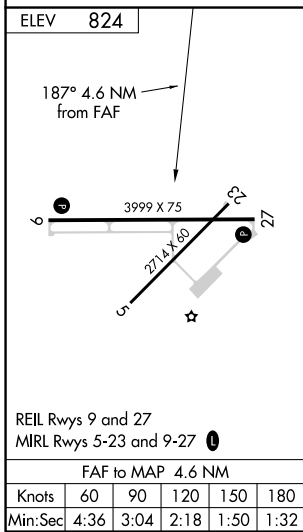
**⚠** MISSED APPROACH: Climbing left turn to 2600 on heading 318° and AZO VOR/DME R-187 to RILLE INT/12 DME and hold.

AWOS-3 <b>119.975</b>	GREAT LAKES APP CON ★ <b>121.2 239.25</b>	UNICOM <b>122.8 (CTAF) 0</b>
--------------------------	--	---------------------------------



EC-1, 21 MAY 2020 to 18 JUN 2020

EC-1, 21 MAY 2020 to 18 JUN 2020



2600 hdg 318°	AZO R-187	RILLE INT	RILLE INT AZO 12	AZO VOR/DME	One Minute Holding Pattern
	MAFZA AZO 16.6		187°	007° → 2600	
			2600	← 187°	
	4.6 NM	12 NM			
CATEGORY	A	B	C	D	
<b>C</b> CIRCLING	1320-1 496 (500-1)	1420-1 596 (600-1)	1560-2 736 (800-2)	NA	