

APP CRS <b>345°</b>	Rwy Idg TDZE Apt Elev	<b>3999</b> <b>667</b> <b>697</b>
------------------------	-----------------------------	---

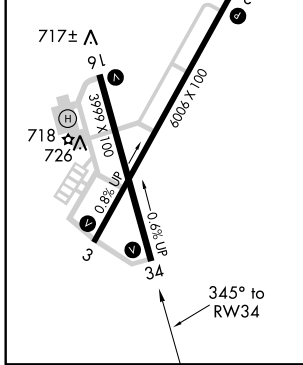
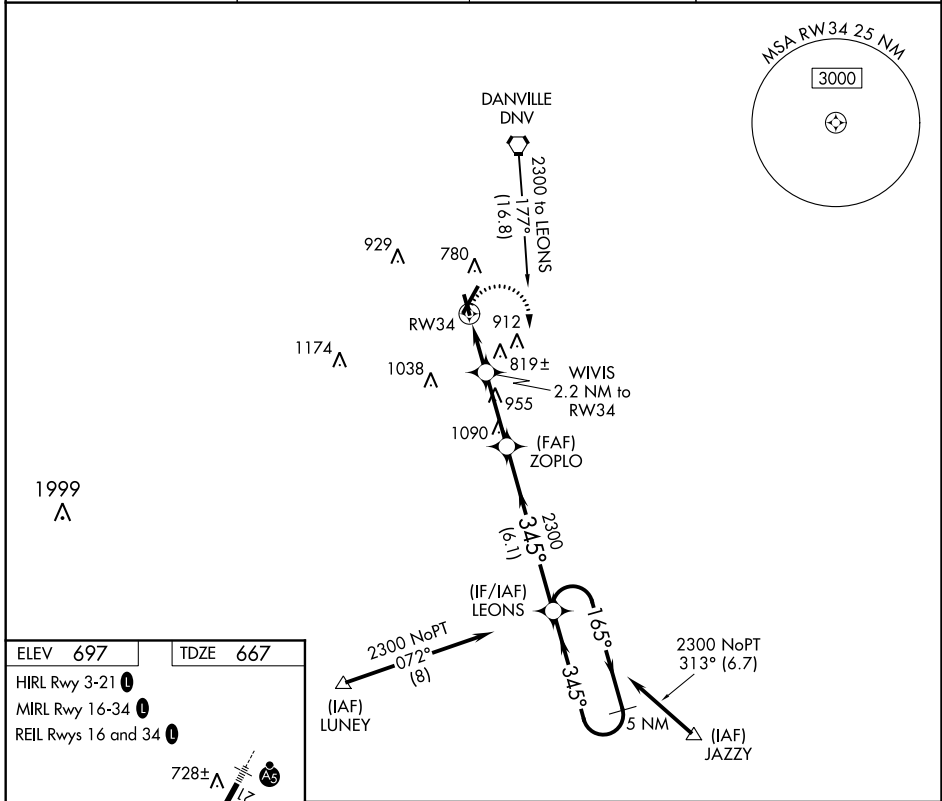
# RNAV (GPS) RWY 34

VERMILION RGNL (DNV)

**▼** If local altimeter setting not received, use University of Illinois-Willard altimeter setting and increase all MDAs 100 feet. DME/DME RNP-0.3 NA.  
**▲** Helicopter visibility reduction below 3/4 SM NA.

**MISSED APPROACH:** Climbing right turn to 2300 direct LEONS and hold.

AWOS-3 <b>119.275</b>	CHAMPAIGN APP CON ★ <b>121.35 285.65</b>	CLNC DEL <b>121.7</b>	UNICOM <b>122.7 (CTAF)</b>
--------------------------	---	--------------------------	-------------------------------



ELEV 697	TDZE 667				
HIRL Rwy 3-21	MIRL Rwy 16-34	REIL Rwy 16 and 34			
<p>2300 LEONS VGSI and descent angles not coincident (VGSI Angle 3.00/TCH 14).</p>		<p>5 NM Holding Pattern</p>			
<p>WIVIS 2.2 NM to RW34</p>		ZOPLO	LEONS		
<p>345° TCH 40</p>		<p>2300 345° 165° 2300</p>			
<p>2.2 NM 2.8 NM 6.1 NM</p>					
CATEGORY	A	B	C	D	
LNAV MDA	1080-1	413 (400-1)	1080-1¼	413 (400-1¼)	
CIRCLING	1160-1	463 (500-1)	1160-1½	1260-2 463 (500-1½) 563 (600-2)	

EC-3, 21 MAY 2020 to 18 JUN 2020

EC-3, 21 MAY 2020 to 18 JUN 2020