

RNAV (GPS) RWY 3

VERMILION RGNL (DNY)

APP CRS	Rwy Idg	6006
030°	TDZE	674
	Apt Elev	697

⚠ If local altimeter setting not received, use University of Illinois-Willard altimeter setting and increase all MDAs 100 feet. DME/DME RNP-0.3 NA. Helicopter visibility reduction below 3/4 SM NA.

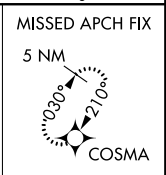
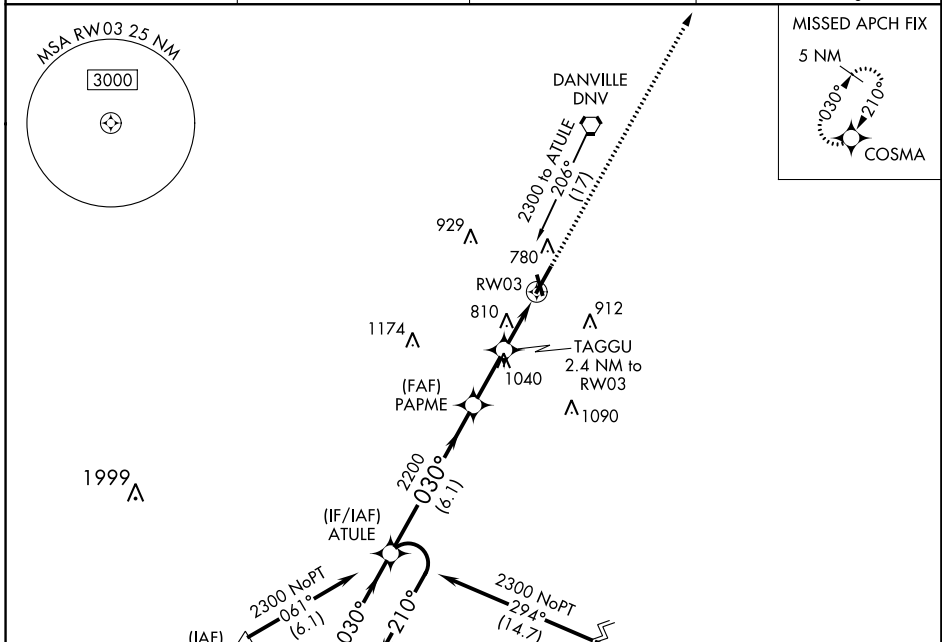
MISSED APPROACH: Climb to 2600 direct COSMA and hold.

AWOS-3
119.275

CHAMPAIGN APP CON ★
121.35 285.65

CLNC DEL
121.7

UNICOM
122.7 (CTAF) 0



ELEV 697	TDZE 674
----------	----------

