


WAAS CH 58004 W21A	APP CRS 210°	Rwy Idg TDZE Apt Elev	6006 697 697
--	------------------------	-----------------------------	---


RNAV (GPS) RWY 21

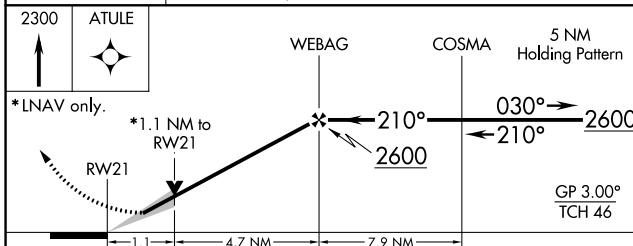
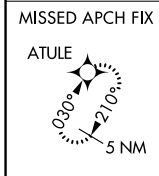
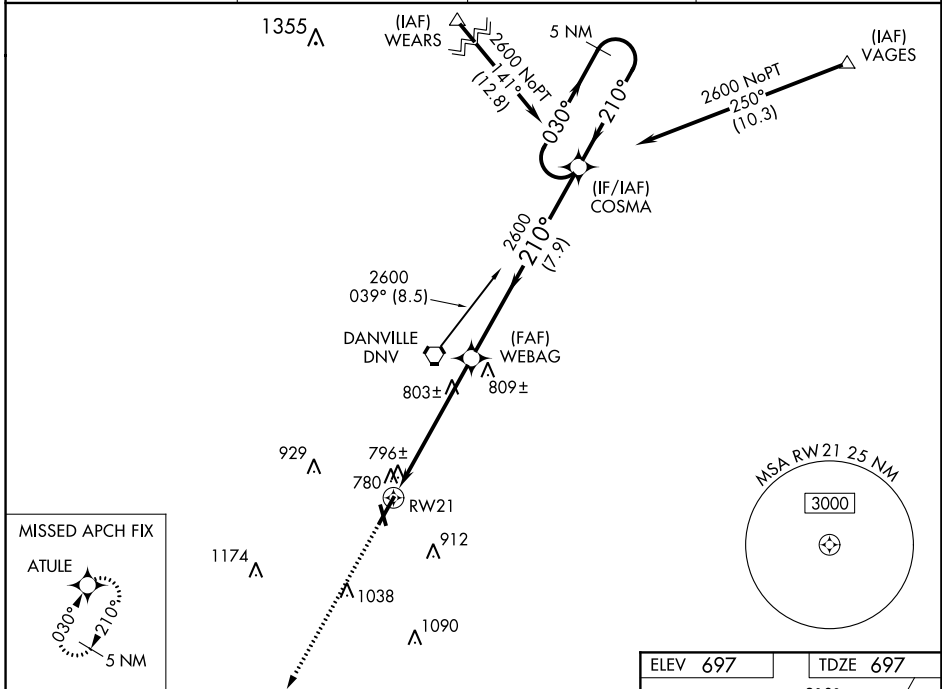
VERMILION RGNL (D.V)

⚠ If local altimeter setting not received, use University of Illinois-Willard altimeter setting and increase all DAs/MDAs 100 feet. Baro-VNAV and VDP NA when using University of Illinois-Willard altimeter setting. For uncompensated Baro-VNAV systems, LNAV/VNAV NA below -16°C (4°F) or above 47°C (116°F). For inop MALS, increase LPV all Cats visibility to 1 mile and LNAV Cat D visibility to 1½ mile. DME/DME RNP-0.3 NA.




MALS 

MISSED APPROACH: Climb to 2300 direct ATULE and hold.

AWOS-3 119.275	CHAMPAIGN APP CON ★ 121.35 285.65	CLNC DEL 121.7	UNICOM 122.7 (CTAF) 
--------------------------	---	--------------------------	---



ELEV 697	TDZE 697
----------	----------

210° to RW21
728±
717±
91
718
726
001 X 4663C
0.08° UP
0.08° UP
34
3A
HIRL Rwy 3-21 
MIRL Rwy 16-34 
REIL Rwy 16 and 34 

CATEGORY	A	B	C	D
LPV DA		990-½	293 (300-½)	
LNAV/VNAV DA		1069-¾	372 (400-¾)	
LNAV MDA	1080-½	383 (400-½)		1080-1 383 (400-1)
CIRCLING	1160-1	463 (500-1)	1160-1½ 463 (500-1½)	1260-2 563 (600-2)

EC-3, 21 MAY 2020 to 18 JUN 2020

EC-3, 21 MAY 2020 to 18 JUN 2020