

# ILS or LOC RWY 9

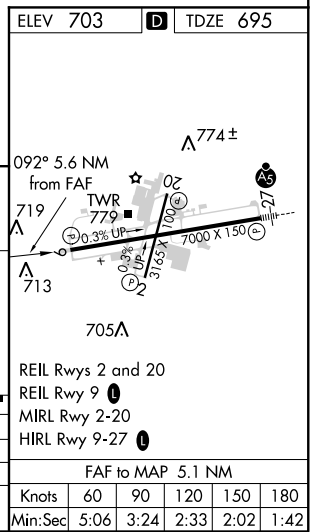
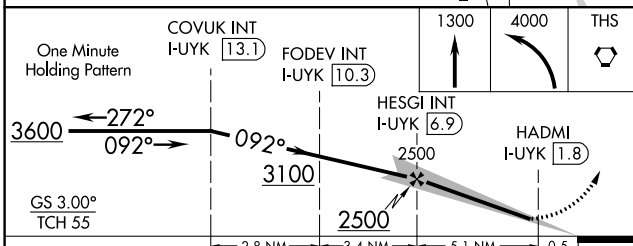
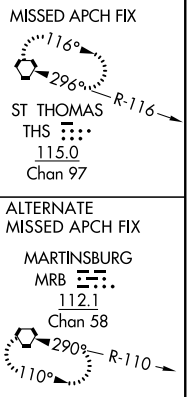
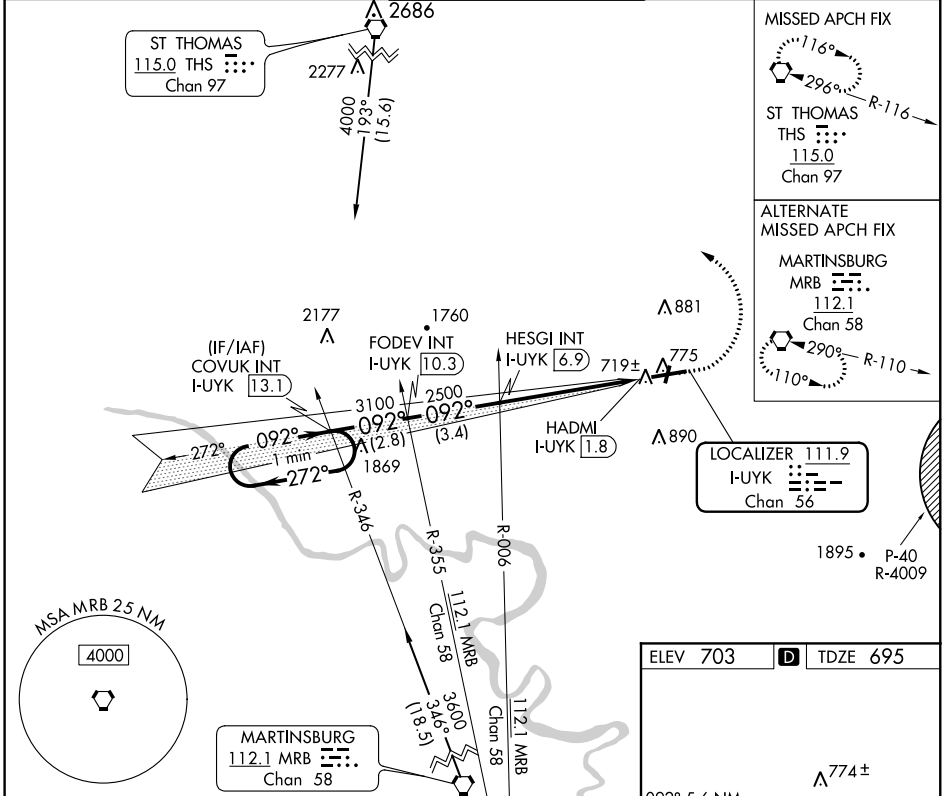
HAGERSTOWN RGNL-RICHARD A HENSON FIELD (HGR)

LOC/DME I-UYK <b>111.9</b> Chan <b>56</b>	APP CRS <b>092°</b>	Rwy Idg <b>7000</b> TDZE <b>695</b> Apt Elev <b>703</b>
-------------------------------------------------	------------------------	---------------------------------------------------------------

**⚠** Rwy 20 helicopter visibility reduction below 1 SM NA. Circling Rwy 20 NA at night.  
**⚠** When local altimeter setting not received, use Martinsburg altimeter setting and increase DA to 934 and all MDA 80 feet; increase S-ILS all Cats and S-LOC Cats C/D visibility ½ and Circling Cat D ¼ mile.

**MISSED APPROACH:** Climb to 1300 then climbing left turn to 4000 direct THS VORTAC and hold.

ASOS <b>126.375</b>	POTOMAC APP CON <b>126.825 239.025</b>	HAGERSTOWN TOWER * <b>120.3 (CTAF) 225.4</b>	GND CON <b>120.8</b>	UNICOM <b>122.95</b>
------------------------	-------------------------------------------	-------------------------------------------------	-------------------------	-------------------------



CATEGORY	A	B	C	D
S-ILS 9	895-¾ 200 (200-¾)			
S-LOC 9	980-1 285 (300-1)	980-⅞ 285 (300-⅞)		
<b>C</b> CIRCLING	1160-1 457 (500-1)	1200-1½ 497 (500-1½)	1320-2 617 (700-2)	

NE-3, 21 MAY 2020 to 18 JUN 2020

NE-3, 21 MAY 2020 to 18 JUN 2020