

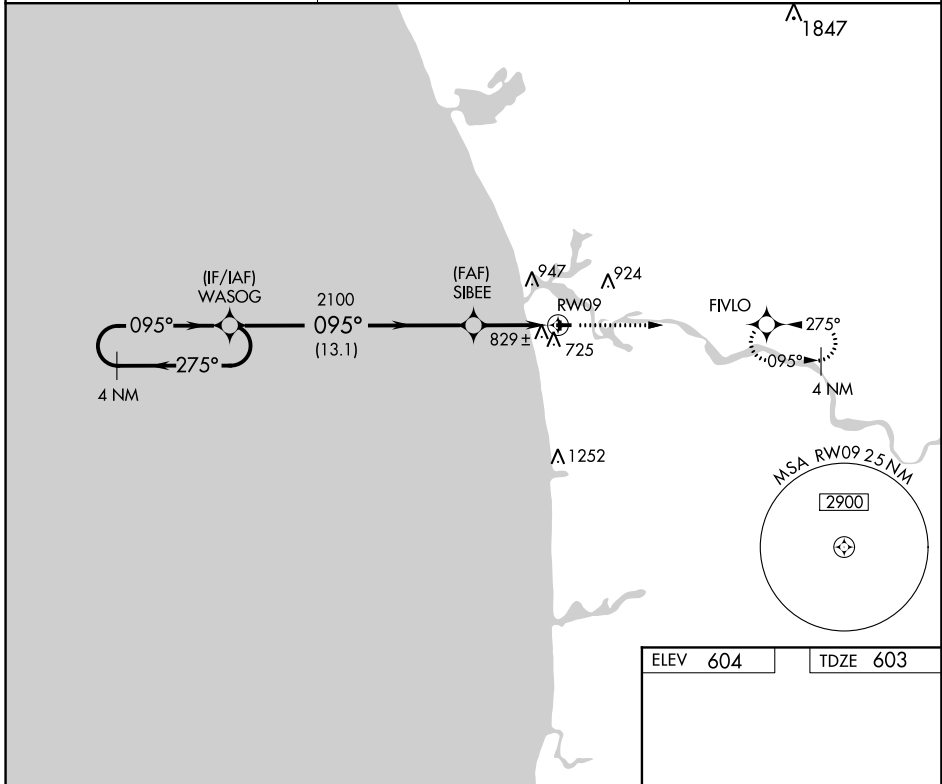
APP CRS <b>095°</b>	Rwy Idg TDZE Apt Elev	<b>3752</b> <b>603</b> <b>604</b>
------------------------	-----------------------------	---

# RNAV (GPS) RWY 9

GRAND HAVEN MEMORIAL AIRPARK (3GM)

RNP APCH.	Use Muskegon altimeter setting. Circling Rwy 18, 36 NA at night. Rwy 9 helicopter visibility reduction below 3/4 SM NA.	MISSED APPROACH: Climb to 2700 direct FIVLO and hold.
-----------	--	---

MKG ASOS <b>124.3</b>	GREAT LAKES APP CON* <b>133.825 290.35</b>	UNICOM <b>122.7</b> (CTAF) <b>0</b>
--------------------------	---	--



EC-1, 21 MAY 2020 to 18 JUN 2020

EC-1, 21 MAY 2020 to 18 JUN 2020

4 NM Holding Pattern		WASOG		SIBEE		RWY 9		FIVLO	
3000		2100		2700		2700		2700	
← 275°		← 095°		← 095°		← 095°		← 095°	
→ 095°		→ 095°		→ 095°		→ 095°		→ 095°	
13.1 NM		4.5 NM		3.04°		TCH 35		0.3% UP	
CATEGORY	A	B	C	D	ELEV 604   TDZE 603				
RNAV MDA	1120-1	517 (600-1)	1120-1½ 517 (600-1½)	NA	81   3752 X 75   0.3% UP				
CIRCLING	1160-1 556 (600-1)	1180-1 576 (600-1)	1180-1½ 576 (600-1½)	NA	2058 X 60   0.3% UP   36				
					REIL Rwy 9 and 27 <b>0</b> MIRL Rwy 9-27 and 18-36 <b>0</b>				