

WAAS CH <b>99709</b> <b>W28A</b>	APP CRS <b>278°</b>	Rwy Idg TDZE Apt Elev	<b>3898</b> <b>900</b> <b>906</b>
--	------------------------	-----------------------------	---

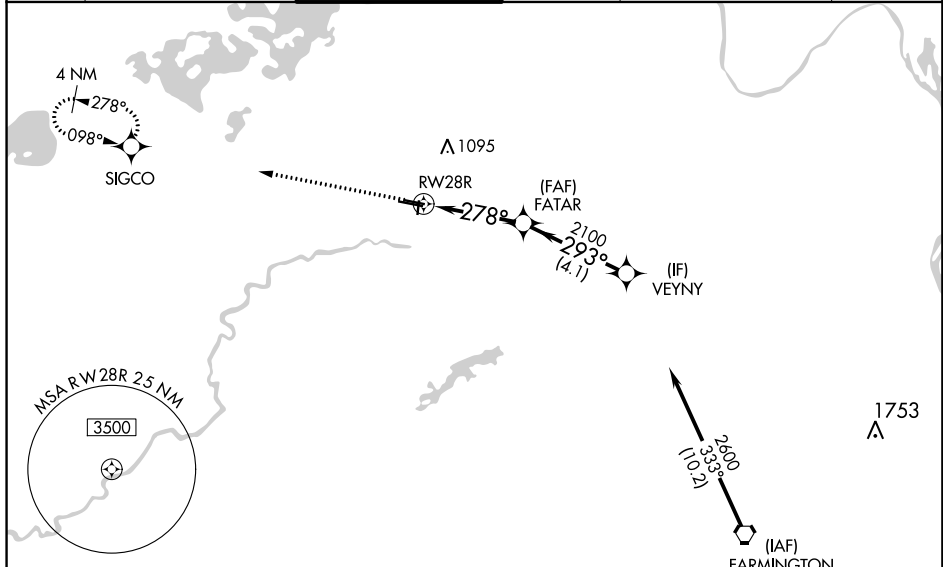
# RNAV (GPS) RWY 28R

FLYING CLOUD (FCM)

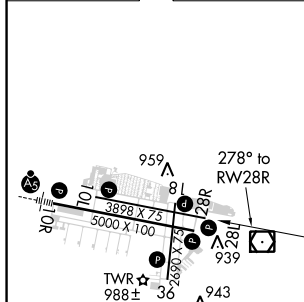
**⚠** Baro-VNAV NA when using Minneapolis-St Paul Intl/Wold Chamberlain altimeter setting. For uncompensated Baro-VNAV systems, LNAV/VNAV NA below -21°C (-5°F) or above 54°C (130°F). DME/DME RNP-0.3 NA. Helicopter visibility reduction below 3/4 SM NA. Night Landing: Rwy 18/36 NA. When local altimeter setting not received, use Minneapolis-St Paul Intl/Wold Chamberlain altimeter setting and increase all DA 34 feet and all MDA 40 feet; increase Circling Cat D visibility 1/4 mile.

MISSED APPROACH: Climb to 2800 direct SIGCO and hold.

ATIS <b>124.9</b>	MINNEAPOLIS APP CON <b>134.7 284.7</b>	FLYING CLOUD TOWER ★ <b>119.15 (CTAF) 0</b>	GND CON <b>121.7</b>	CLNC DEL (When tower closed) <b>121.7</b>	UNICOM <b>122.95</b>
----------------------	---	--	-------------------------	---	-------------------------

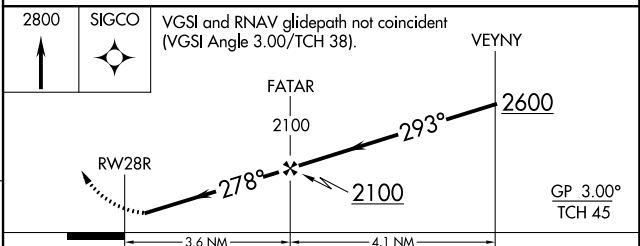


ELEV 906	TDZE 900
----------	----------



HIRL Rwy 10R-28L	REL Rwys 10L, 28R	REL Rwys 18, 28L, and 36	MIRL Rwys 10L-28R and 18-36
------------------	-------------------	--------------------------	-----------------------------

Procedure NA for arrivals on FGT VORTAC airway radials 258 CW 011.



CATEGORY	A	B	C	D
LPV DA		1150-1	250 (300-1)	
LNAV/VNAV DA		1150-1	250 (300-1)	
LNAV MDA		1240-1	340 (400-1)	
<b>C</b> CIRCLING	1320-1 414 (500-1)	1440-1 534 (600-1)	1440-1½ 534 (600-1½)	1540-2 634 (700-2)

NC-1, 21 MAY 2020 to 18 JUN 2020

NC-1, 21 MAY 2020 to 18 JUN 2020