

LEMOORE, CALIFORNIA

TACAN RWY 14R

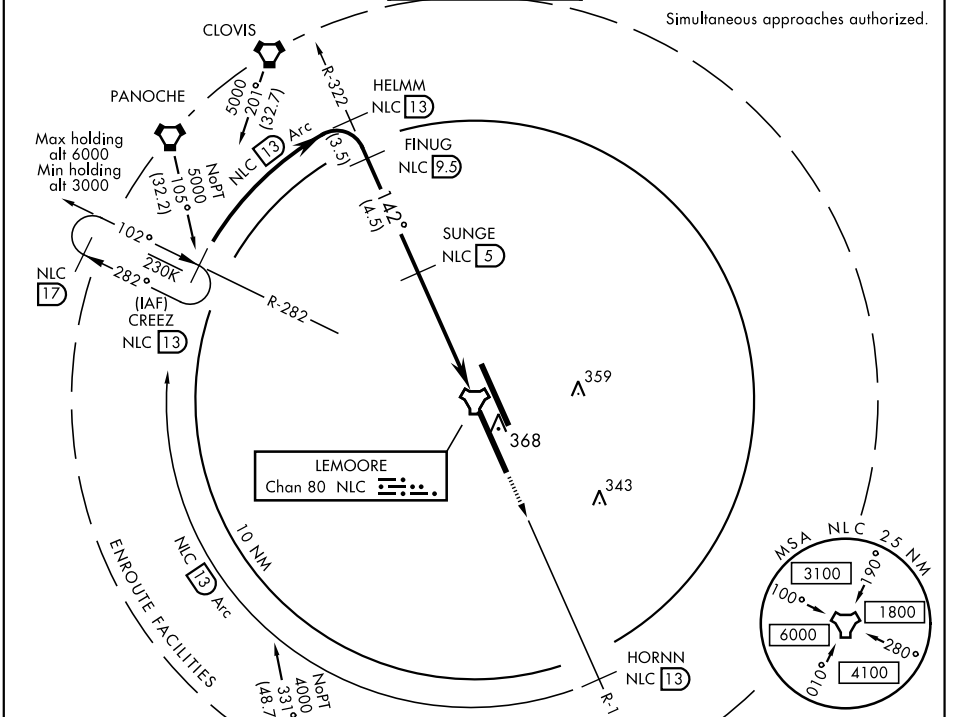
TACAN Chan 80	NLC 142°	APCH CRS 142°	Rwy ldg 13,501 TDZE 229 Arprt Elev 229
-------------------------	--------------------	-------------------------	---

AL-5067 [USN]

LEMOORE NAS (REEVES FIELD) (KNLC)

▽ MISSED APPROACH: Climb to 3000 via R-142 to HORNN, then arc SW of NLC TACAN via the 13 DME Arc to CREEZ and hold.

ATIS ★ 121.575 327.15	LEMOORE APP CON N124.1 S118.15 269.025	LEMOORE TOWER ★ 128.3 360.2	GND CON 121.65 305.2	CLNC DEL 124.1 371.9	ASR/PAR
---------------------------------	--	---------------------------------------	--------------------------------	--------------------------------	---------

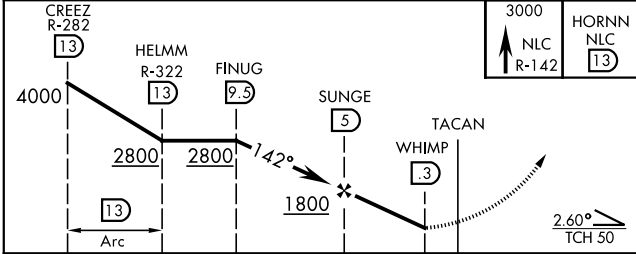


SW-2, 21 MAY 2020 to 18 JUN 2020

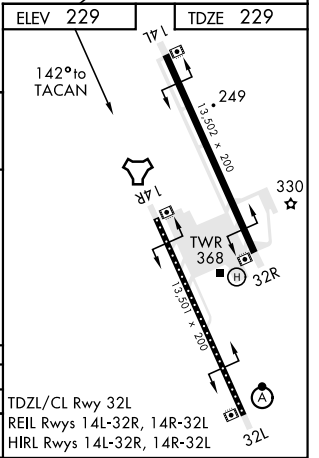
SW-2, 21 MAY 2020 to 18 JUN 2020

EMERG SAFE ALT 100 NM 16,500

AVENAL (AVE transition requires VOR)



CATEGORY	A	B	C	D
S-14R	560/55		331	(400-1)
C CIRCLING	680-1	451 (500-1)	680-1½ 451 (500-1½)	780-2 551 (600-2)



LEMOORE, CALIFORNIA
Amdt 4 24MAY18

36°20'N-119°57'W

LEMOORE NAS (REEVES FIELD) (KNLC)

TACAN RWY 14R