

# TACAN RWY 14L

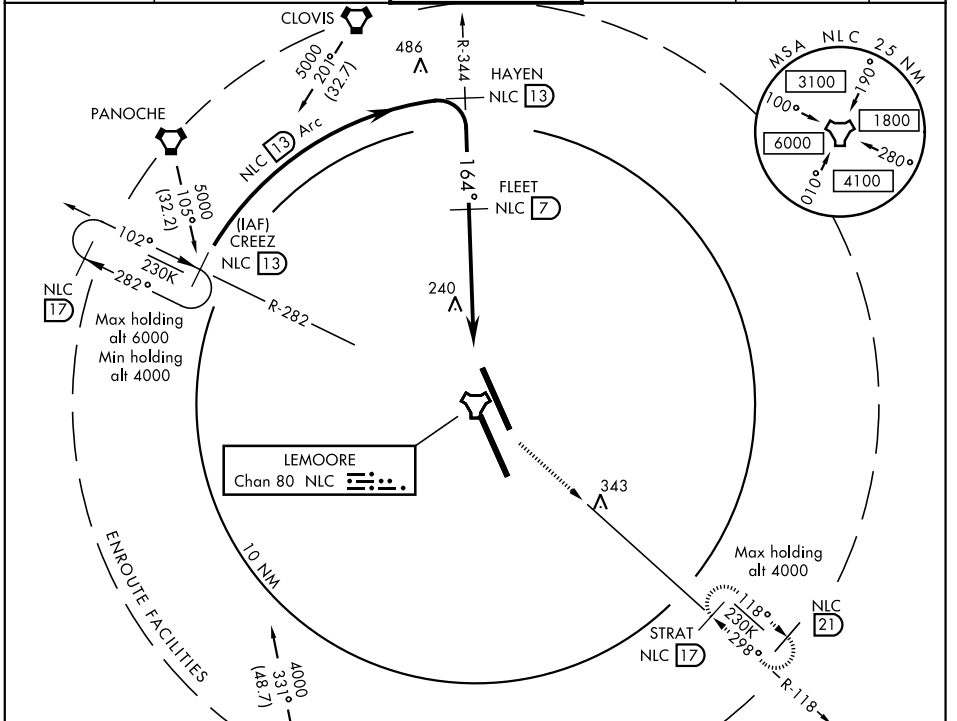
TACAN Chan <b>80</b>	NLC	APCH CRS <b>164°</b>	Rwy ldg TDZE <b>220</b> Arprt Elev <b>229</b>
-------------------------	-----	-------------------------	---

AL-5067 [USN]

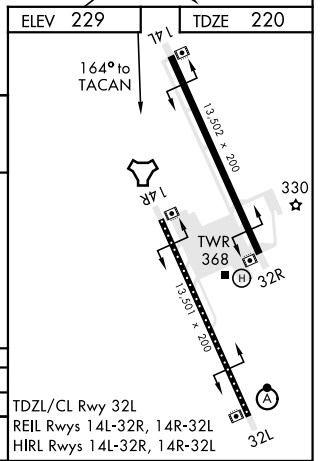
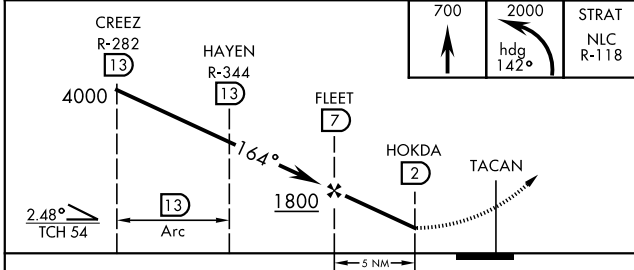
LEMOORE NAS (REEVES FIELD) (KNLC)

**▽** MISSED APPROACH: Climb to 700 then climbing left turn to 2000 via heading 142°, intercept NLC TACAN R-118 to STRAT and hold.

ATIS ★ <b>121.575 327.15</b>	LEMOORE APP CON <b>N124.1 S118.15 269.025</b>	LEMOORE TOWER ★ <b>128.3 340.2</b>	GND CON <b>121.65 305.2</b>	CLNC DEL <b>124.1 371.9</b>	ASR/PAR
---------------------------------	--	---------------------------------------	--------------------------------	--------------------------------	---------



EMERG SAFE ALT 100 NM 16,500



CATEGORY	A	B	C	D
S-14L		560/55	340	(400-1)
<b>C</b> CIRCLING	680-1	451 (500-1)	680-1½ 451 (500-1½)	780-2 551 (600-2)

TDZL/CL Rwy 32L  
REIL Rwys 14L-32R, 14R-32L  
HIRL Rwys 14L-32R, 14R-32L

# TACAN RWY 14L

SW-2, 21 MAY 2020 to 18 JUN 2020

SW-2, 21 MAY 2020 to 18 JUN 2020