

RNAV (GPS) RWY 32R

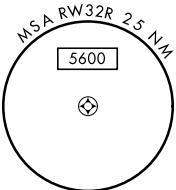
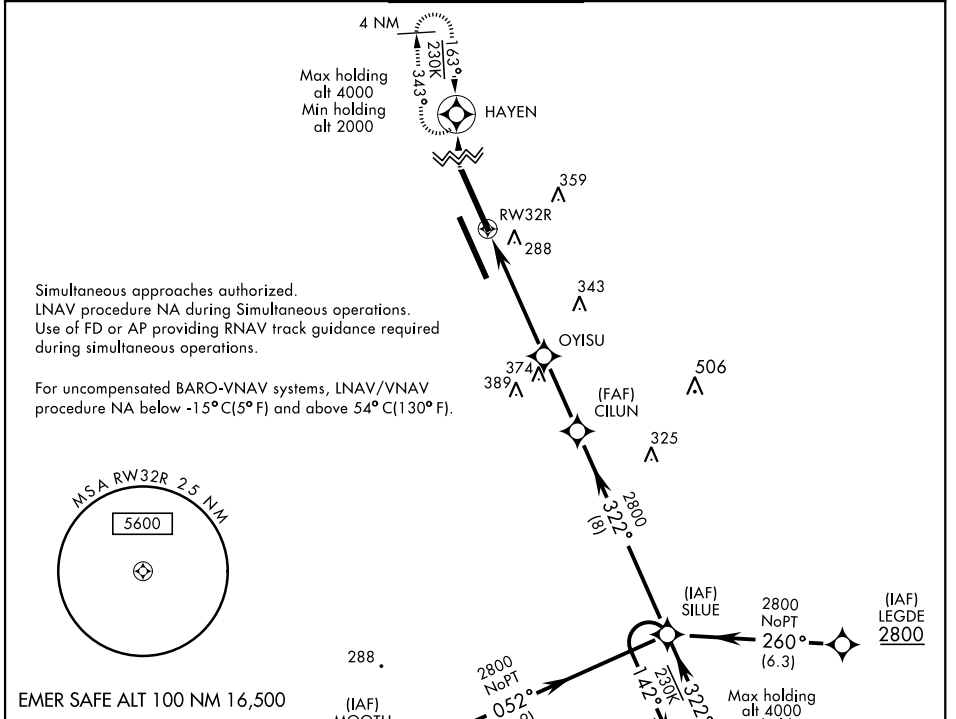
WAAS Chan 60335 W32B	APCH CRS 322°	Rwy Idg 13,502 TDZE 222 Arpt Elev 229
--	-------------------------	--

AL-5067 [USN]

LEMOORE NAS (REEVES FIELD) (KNLC)

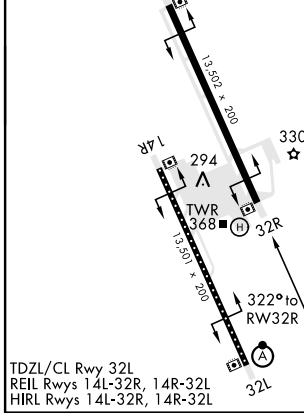
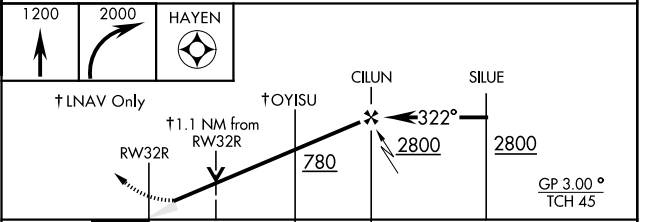
<p>▼ DME/DME RNP-0.3 NA</p>		<p>MISSED APPROACH: Climb to 1200, then climbing right turn to 2000 direct HAYEN and hold.</p>		
------------------------------------	--	--	--	--

<p>ATIS ★ 121.575 327.15</p>	<p>LEMOORE APP CON N124.1 S118.15 269.025</p>	<p>LEMOORE TOWER ★ 128.3 360.2</p>	<p>GND CON 121.65 305.2</p>	<p>CLNC DEL 124.1 371.9</p>	<p>ASR/PAR</p>
---	--	---	--	--	----------------



EMER SAFE ALT 100 NM 16,500

ELEV 229	TDZE 222
----------	----------



CATEGORY	A	B	C	D
LPV DA		422/40	200 (200-¾)	
LNAV/VNAV DA	500/45 278 (300-¾)	511/50 289 (300-1)	519/50 297 (300-1)	530/55 308 (400-1)
LNAV MDA	620/55	398 (400-1)	620/60	398 (400-1½)
C CIRCLING	680-1	451 (500-1)	680-1½ 451 (500-1½)	780-2 551 (600-2)

RNAV (GPS) RWY 32R

SW-2, 21 MAY 2020 to 18 JUN 2020

SW-2, 21 MAY 2020 to 18 JUN 2020