

LEMOORE, CALIFORNIA

# RNAV (GPS) RWY 14R

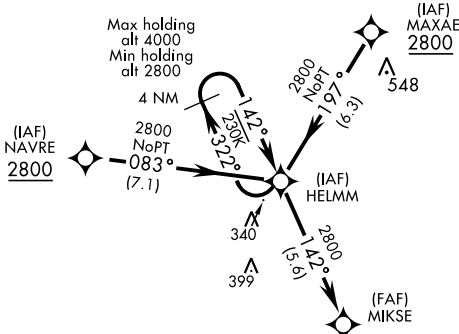
WAAS Chan <b>80286</b> <b>W14B</b>	APCH CRS <b>142°</b>	Rwy Idg <b>13,501</b> TDZE <b>229</b> Arpt Elev <b>229</b>
--	-------------------------	--

AL-5067 [USN]

LEMOORE NAS (REEVES FIELD) (KNLC)

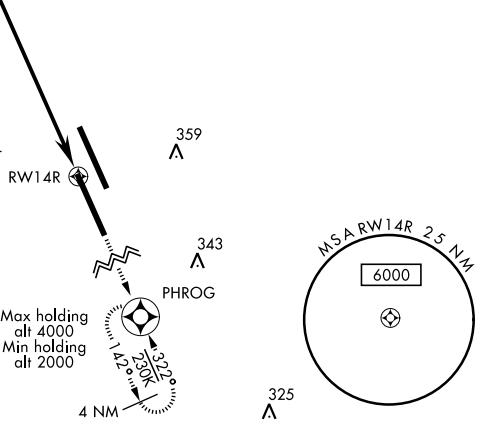
DME/DME RNP-0.3 NA		MISSED APPROACH: Climb to 2000 direct PHROG and hold.			
--------------------	--	---	--	--	--

ATIS ★ <b>121.575 327.15</b>	LEMOORE APP CON <b>N124.1 S118.15 269.025</b>	LEMOORE TOWER ★ <b>128.3 360.2</b>	GND CON <b>121.65 305.2</b>	CLNC DEL <b>124.1 371.9</b>	ASR/PAR
---------------------------------	--	---------------------------------------	--------------------------------	--------------------------------	---------

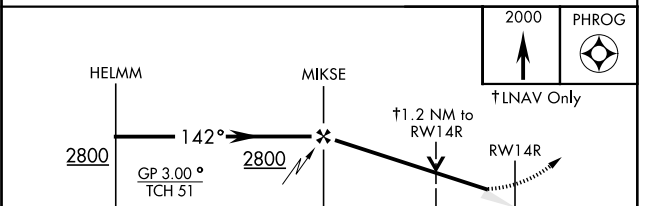
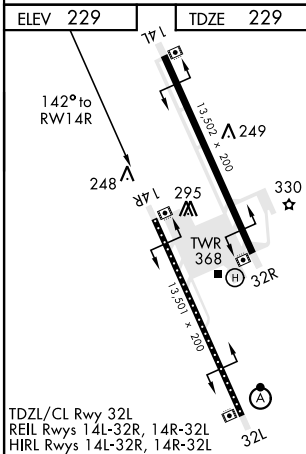


Simultaneous approaches authorized.  
LNAV procedure NA during Simultaneous operations.  
Use of FD or AP providing RNAV track guidance required during simultaneous operations.

For uncompensated BARO-VNAV systems, LNAV/VNAV procedure NA below -15°C (5°F) and above 54°C (130°F).



EMER SAFE ALT 100 NM 16,500



CATEGORY	A	B	C	D
LPV DA		429/40	200 (200-¾)	
LNAV/VNAV DA		479/40	250 (300-¾)	
LNAV MDA	660/55	431 (500-1)	660-1¼ 431 (500-1¼)	
CIRCLING	680-1	451 (500-1)	680-1½ 451 (500-1½)	780-2 551 (600-2)

LEMOORE, CALIFORNIA  
Amdt 5 24MAY18

36°20'N-119°57'W

LEMOORE NAS (REEVES FIELD) (KNLC)

# RNAV (GPS) RWY 14R

SW-2, 21 MAY 2020 to 18 JUN 2020

SW-2, 21 MAY 2020 to 18 JUN 2020