

RNAV (GPS) RWY 14L

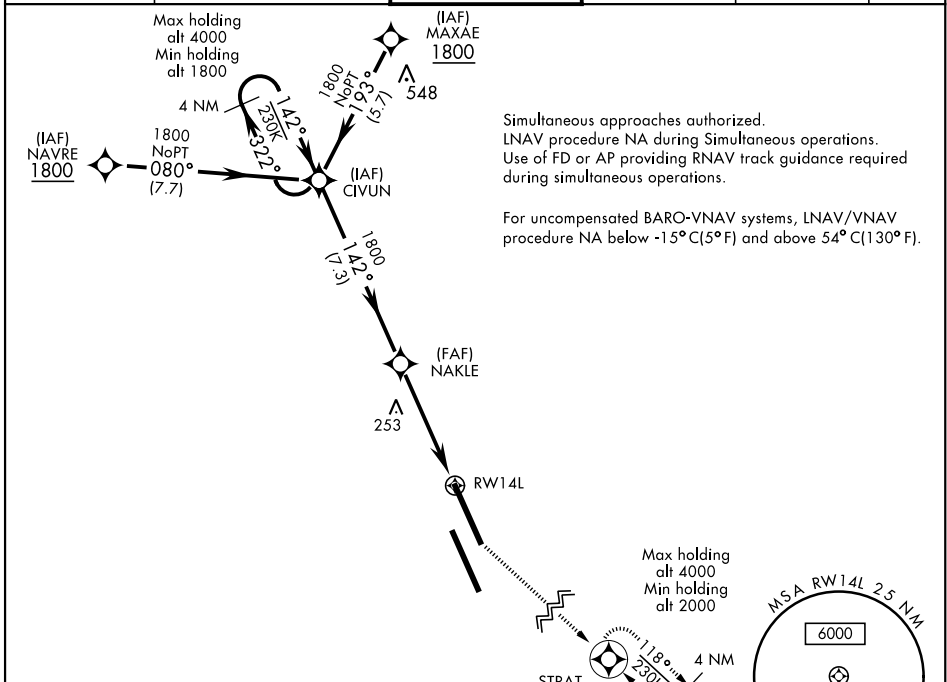
WAAS Chan 70209 W14A	APCH CRS 142°	Rwy Idg 13,502 TDZE 220 Arprt Elev 229
--	-------------------------	---

AL-5067 [USN]

LEMOORE NAS (REEVES FIELD) (KNLC)

DME/DME RNP-0.3 NA		MISSED APPROACH: Climb to 1200, then climb left turn to 2000 direct STRAT and hold.			
--------------------	--	---	--	--	--

ATIS ★ 121.575 327.15	LEMOORE APP CON N124.1 S118.15 269.025	LEMOORE TOWER ★ 128.3 340.2	GND CON 121.65 305.2	CLNC DEL 124.1 371.9	ASR/PAR
---------------------------------	--	---------------------------------------	--------------------------------	--------------------------------	---------



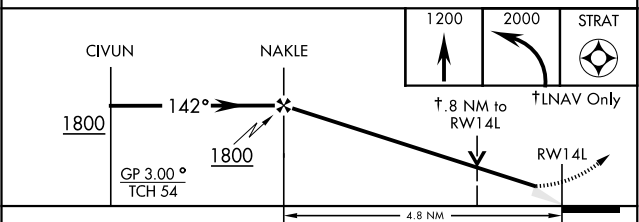
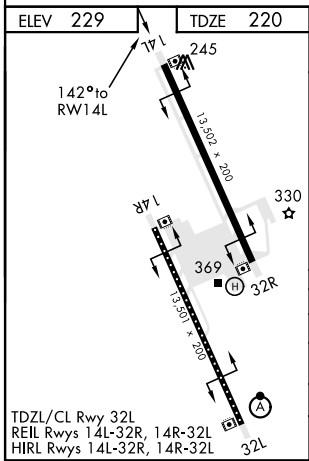
Simultaneous approaches authorized.
LNAV procedure NA during Simultaneous operations.
Use of FD or AP providing RNAV track guidance required during simultaneous operations.

For uncompensated BARO-VNAV systems, LNAV/VNAV procedure NA below -15°C (5°F) and above 54°C (130°F).

SW-2, 21 MAY 2020 to 18 JUN 2020

SW-2, 21 MAY 2020 to 18 JUN 2020

EMERG SAFE ALT 100 NM 16,500



CATEGORY	A	B	C	D
LPV DA		420/40	200	(200-¾)
LNAV/VNAV DA		470/40	250	(300-¾)
LNAV MDA	520/55	300 (300-1)	520/45	300 (300-¾)
CIRCLING	680-1	451 (500-1)	680-1½ 451 (500-1½)	780-2 551 (600-2)

RNAV (GPS) RWY 14L