

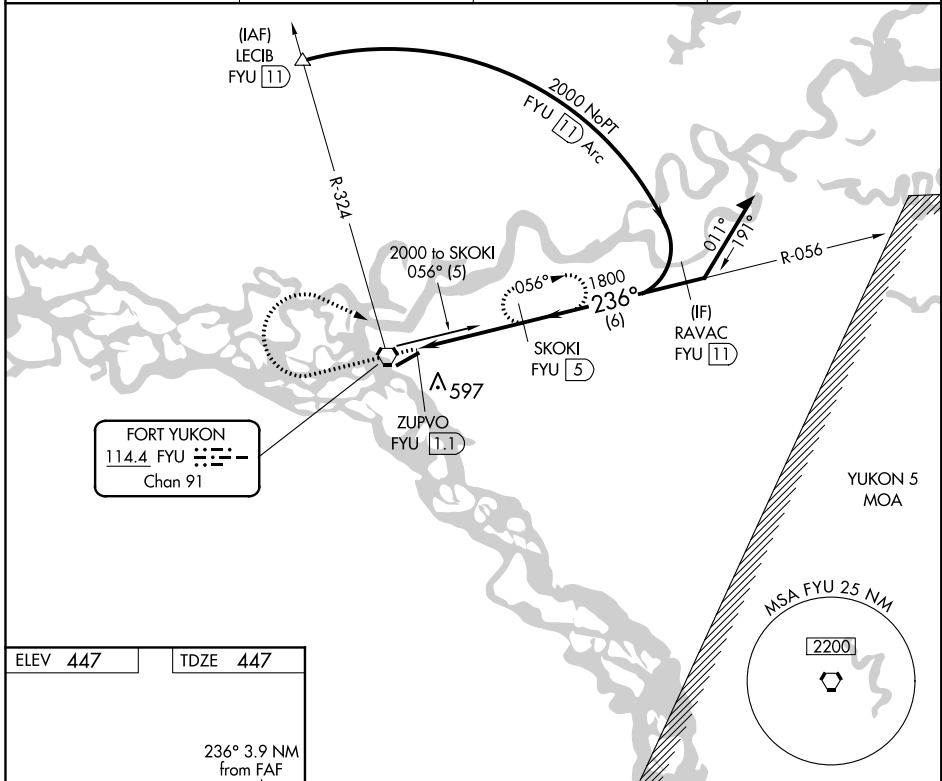
VORTAC FYU 114.4 Chan 91	APP CRS 236°	Rwy Idg 5000 TDZE 447 Apt Elev 447
--	------------------------	---

VOR/DME or TACAN RWY 22

FORT YUKON (FYU) (PFYU)

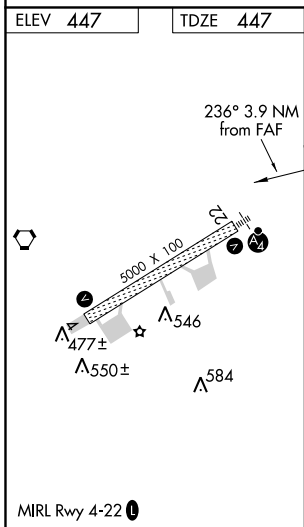
Inop table does not apply. Circling NA southeast of Rwy 4-22. Rwy 22 Straight-In and Circling minimums NA at night. Helicopter visibility reduction below 1 SM NA.	MALSF	MISSED APPROACH: Climb to 2000 then right turn on heading 100° and FYU VORTAC R-056 to SKOKI/5 DME and hold.
--	-------	--

AWOS-3P 125.8	ANCHORAGE CENTER 135.0 225.4	FAIRBANKS RADIO 122.05	CTAF 122.5 0
-------------------------	--	----------------------------------	------------------------



AK, 21 MAY 2020 to 16 JUL 2020

AK, 21 MAY 2020 to 16 JUL 2020



2000	↑	hdg 100°	FYU R-056	SKOKI FYU 5	SKOKI FYU 5	VGSI and descent angles not coincident (VGSI Angle 3.00/TCH 27).
						Remain within 10 NM
CATEGORY	A		B		C	D
S-22	960-1 513 (600-1)		960-1 513 (600-1)		960-1 513 (600-1)	1000-2 553 (600-2)
CIRCLING	960-1 513 (600-1)		960-1 513 (600-1)		960-1 513 (600-1)	1000-2 553 (600-2)