

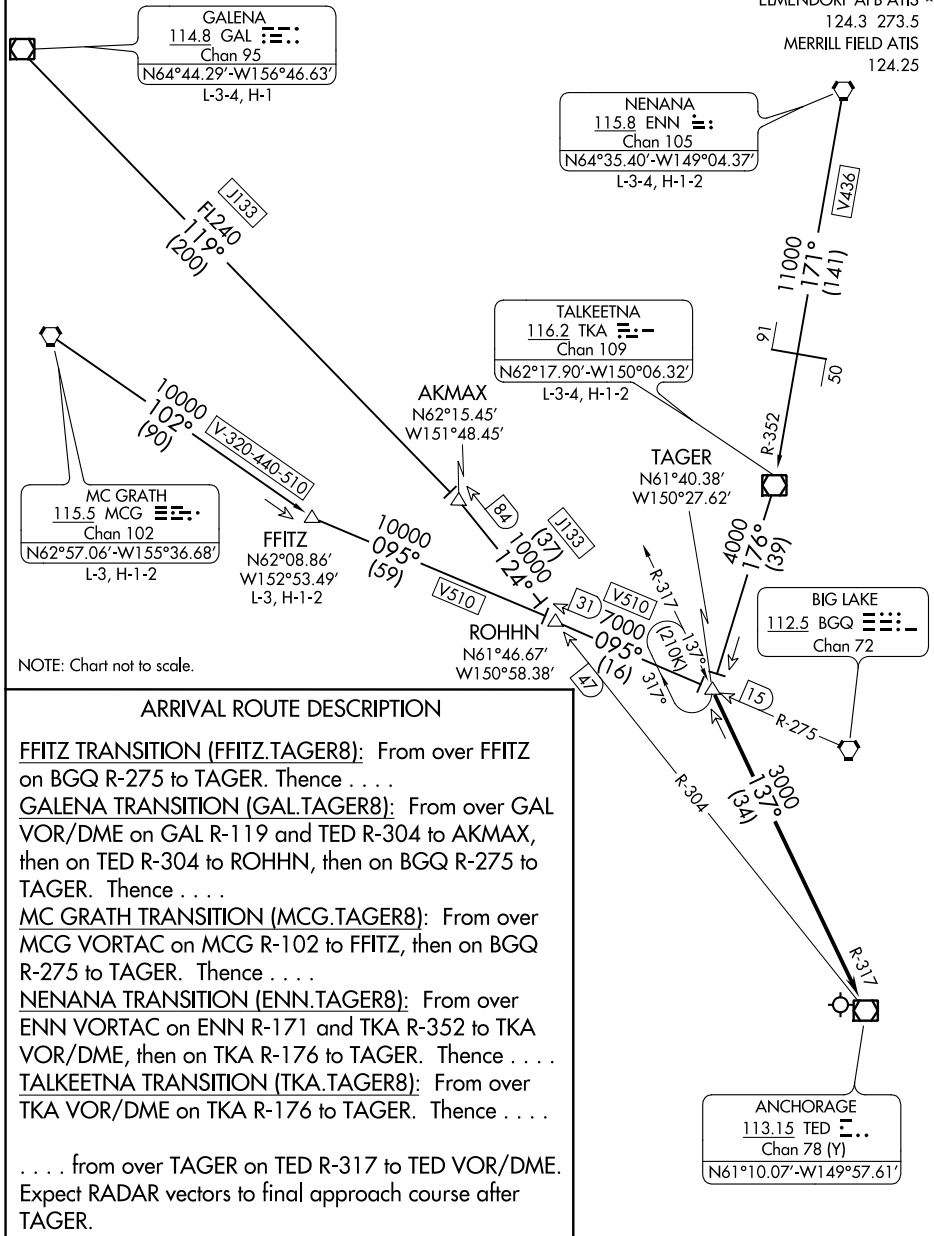
(TAGER.TAGER8) 17117  
**TAGER EIGHT ARRIVAL**

TED STEVENS ANCHORAGE INTL (ANC)(PANC)  
 ANCHORAGE, ALASKA

AL-1500 (FAA)

ANCHORAGE APP CON 118.6 290.5  
 ANCHORAGE INTL D-ATIS 135.5  
 ELMENDORF AFB ATIS \* 124.3 273.5  
 MERRILL FIELD ATIS 124.25

NOTE: DME required.



**ARRIVAL ROUTE DESCRIPTION**

**FFITZ TRANSITION (FFITZ.TAGER8):** From over FFITZ on BGQ R-275 to TAGER. Thence . . . .

**GALENA TRANSITION (GAL.TAGER8):** From over GAL VOR/DME on GAL R-119 and TED R-304 to AKMAX, then on TED R-304 to ROHHN, then on BGQ R-275 to TAGER. Thence . . . .

**MC GRATH TRANSITION (MCG.TAGER8):** From over MCG VORTAC on MCG R-102 to FFITZ, then on BGQ R-275 to TAGER. Thence . . . .

**NENANA TRANSITION (ENN.TAGER8):** From over ENN VORTAC on ENN R-171 and TKA R-352 to TKA VOR/DME, then on TKA R-176 to TAGER. Thence . . . .

**TALKHEETNA TRANSITION (TKA.TAGER8):** From over TKA VOR/DME on TKA R-176 to TAGER. Thence . . . .

. . . . from over TAGER on TED R-317 to TED VOR/DME. Expect RADAR vectors to final approach course after TAGER.

**TAGER EIGHT ARRIVAL**  
 (TAGER.TAGER8) 15OCT15

ANCHORAGE, ALASKA  
 TED STEVENS ANCHORAGE INTL (ANC)(PANC)

AK, 21 MAY 2020 to 16 JUL 2020

AK, 21 MAY 2020 to 16 JUL 2020