

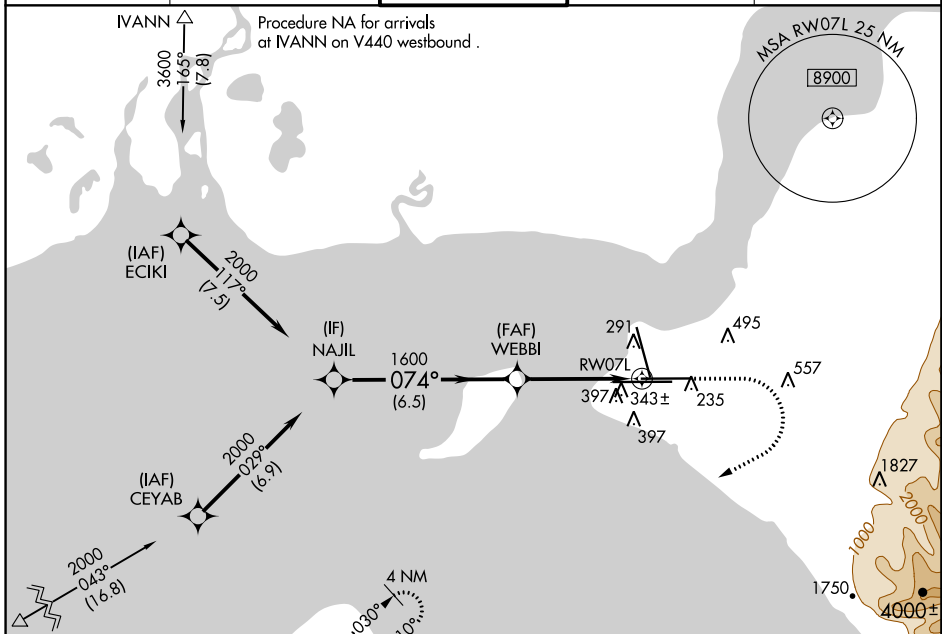
WAAS CH 86215 W07B	APP CRS 074°	Rwy Idg 10600 TDZE 128 Apt Elev 151
--	------------------------	--

RNAV (GPS) RWY 7L

TED STEVENS ANCHORAGE INTL (ANC) (PANC)

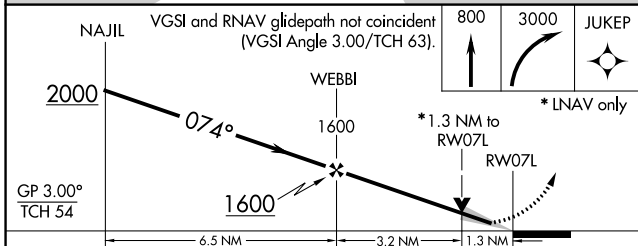
RNP APCH.	MALSR	MISSED APPROACH: Climb to 800 then climbing right turn to 3000 direct JUKEP and hold.
▼ For uncompensated Baro-VNAV systems, LNAV/VNAV NA below -18°C or above 54°C. For inop ALS, increase LNAV/VNAV all Cats and LNAV Cat C/D visibility to 1½ SM.	⚠	

D-ATIS 135.5	ANCHORAGE APP CON 118.6 290.5	ANCHORAGE TOWER 118.3 257.8	GND CON 121.9 338.25	CLNC DEL 119.4 323.1
------------------------	---	---------------------------------------	--------------------------------	--------------------------------

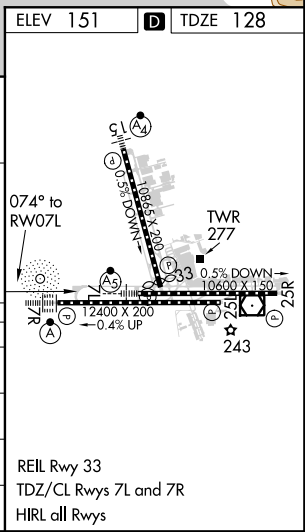


Procedure NA for arrivals at IVANN on V440 westbound.

Procedure NA for arrivals at GASTO on V462 southwest bound.



CATEGORY	A	B	C	D
LPV DA		328/18	200 (200-½)	
LNAV/VNAV DA		595/50	467 (500-1)	
LNAV MDA	600/24	472 (500-½)	600/50	472 (500-1)
CIRCLING	700-1	549 (600-1)	800-1¾ 649 (700-1¾)	920-2½ 769 (800-2½)



AK, 21 MAY 2020 to 16 JUL 2020

AK, 21 MAY 2020 to 16 JUL 2020