

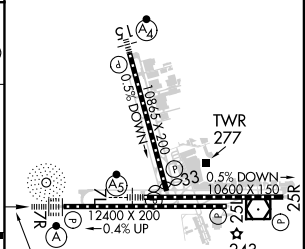
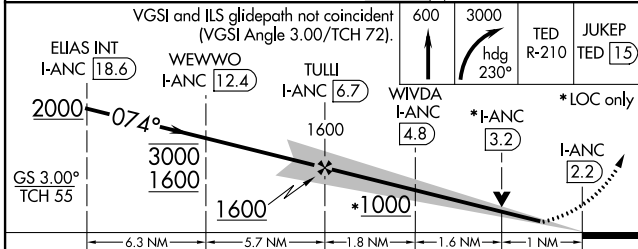
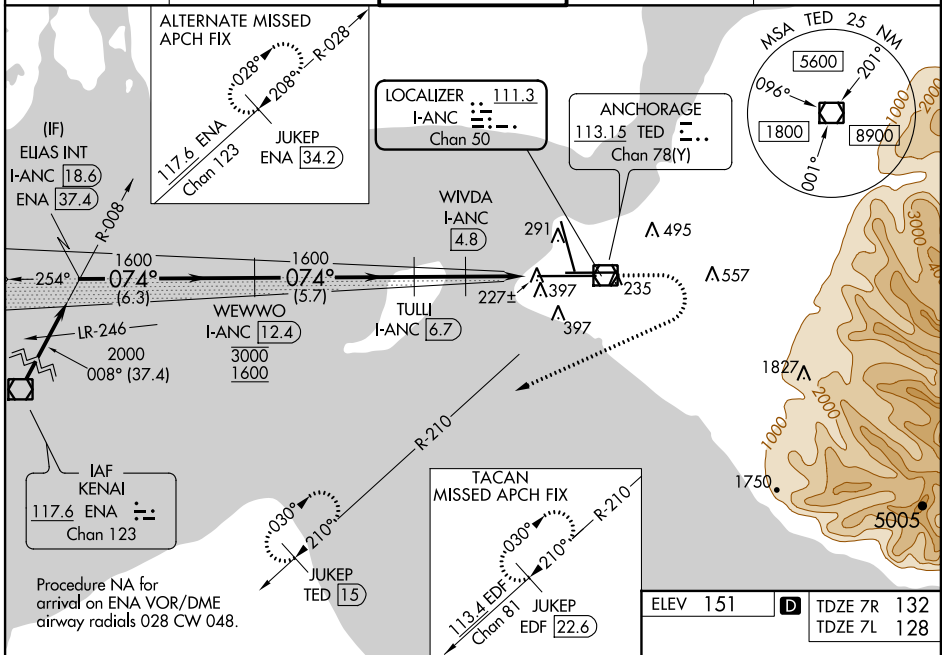
LOC/DME I-ANC <b>111.3</b> Chan 50	APP CRS <b>074°</b>	Rwy Idg TDZE Apt Elev	7R <b>12400</b> <b>132</b> <b>151</b>	7L <b>10600</b> <b>128</b> <b>151</b>
--	------------------------	-----------------------------	--	--

# ILS or LOC RWY 7R

TED STEVENS ANCHORAGE INTL (ANC) (PANC)

DME required. ⚠ For inop ALS, increase S-ILS 7R Cat E visibility to RVR 4000, and S-LOC 7R Cat E visibility to RVR 6000. Rwy 7L threshold 6140 feet east of Rwy 7R threshold.	ALSF-2 Rwy 7R 	MALS Rwy 7L 	MISSED APPROACH: Climb to 600 then climbing right turn to 3000 on heading 230° TED VOR/DME R-210 to JUKEP/TED 15 DME and hold. (TACAN aircraft climb to 600 then climbing right turn to 3000 on heading 230° and EDF TACAN R-210 to JUKEP/EDF 22.6 DME and hold.)
--	-------------------	-----------------	---

D-ATIS <b>135.5</b>	ANCHORAGE APP CON <b>118.6 290.5</b>	ANCHORAGE TOWER <b>118.3 257.8</b>	GND CON <b>121.9 338.25</b>	CLNC DEL <b>119.4 323.1</b>
------------------------	---	---------------------------------------	--------------------------------	--------------------------------



CATEGORY	A	B	C	D	E
S-ILS 7R	332/18 200 (200-½)				
S-LOC 7R	520/24	388 (400-½)	520/35 388 (400-¾)		
S-LOC SIDESTEP 7L	520/55	392 (400-1)	520-1½ 392 (400-1½)		
CIRCLING	700-1	549 (600-1)	800-1¾ 649 (700-1¾)	920-2½ 769 (800-2½)	920-2¾ 769 (800-2¾)

074° 4.4 NM from FAF

REIL Rwy 33  
 TDZ/CL Rwy 7L and 7R  
 HIRL all Rwy's

AK, 21 MAY 2020 to 16 JUL 2020

AK, 21 MAY 2020 to 16 JUL 2020