

LOC/DME I-ANC 111.3 Chan 50	APP CRS 074°	Rwy Idg 12400 TDZE 132 Apt Elev 151
--	------------------------	--

ILS RWY 7R (SA CAT I)

TED STEVENS ANCHORAGE INTL (ANC) (PANC)

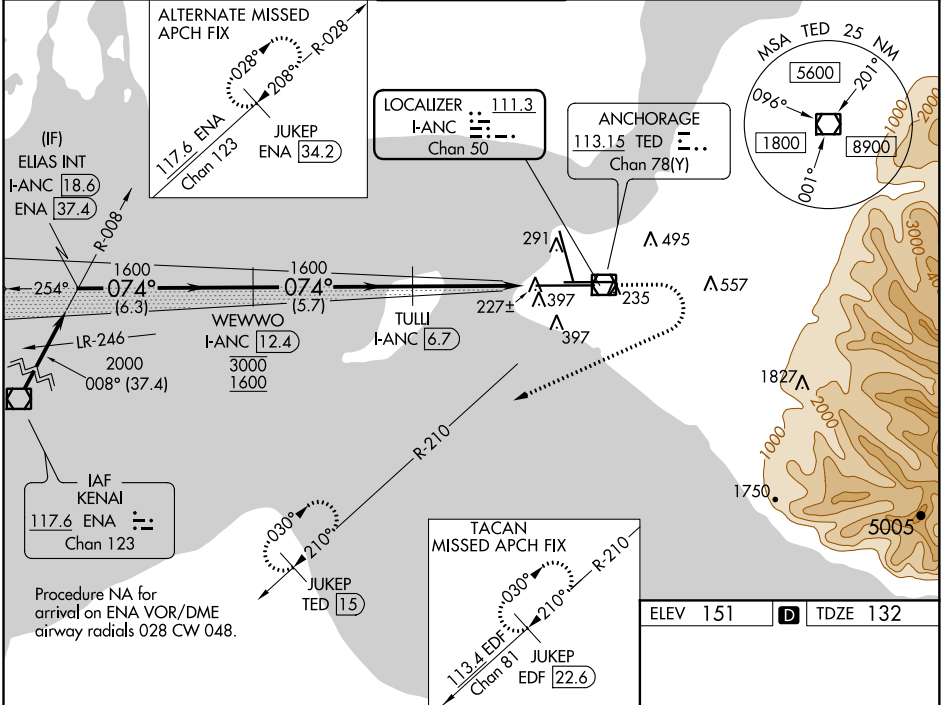
DME required.

▼ Rwy 7L threshold 6140 feet east of Rwy 7R threshold. Requires specific OPSPEC, MSPEC, or LOA approval and use of HUD to DH.

ALSf-2

MISSED APPROACH: Climb to 600 then climbing right turn to 3000 on heading 230° TED VOR/DME R-210 to JUKEP/TED 15 DME and hold. (TACAN aircraft climb to 600 then climbing right turn to 3000 on heading 230° and EDF TACAN R-210 to JUKEP/EDF 22.6 DME and hold).

D-ATIS 135.5	ANCHORAGE APP CON 118.6 290.5	ANCHORAGE TOWER 118.3 257.8	GND CON 121.9 338.25	CLNC DEL 119.4 323.1
------------------------	---	---------------------------------------	--------------------------------	--------------------------------



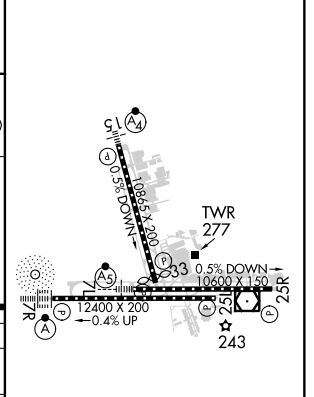
Procedure NA for arrival on ENA VOR/DME airway radials 028 CW 048.

VGSI and ILS glidepath not coincident (VGSI Angle 3.00/TCH 72).

ELIAS INT I-ANC (18.6)	WEWWO I-ANC (12.4)	TULLI I-ANC (6.7)	600	3000	TED R-210	JUKEP TED (15)
2000	3000	1600	↑	hdg 230°		
GS 3.00° TCH 55	1600	1600				
6.3 NM	5.7 NM	4.4 NM				

CATEGORY	A	B	C	D
S-ILS 7R	RA 245/14 150 DA 282			

ELEV 151	D	TDZE 132
----------	---	----------



SA CATEGORY I ILS - SPECIAL AIRCREW & AIRCRAFT CERTIFICATION REQUIRED

REIL Rwy 33
TDZ/CL Rwy 7L and 7R
HIRL all Rwy