

VOR/DME OSW 117.6 Chan 123	APP CRS 044°	Rwy Idg TDZE 946 Apt Elev 946
--	------------------------	---

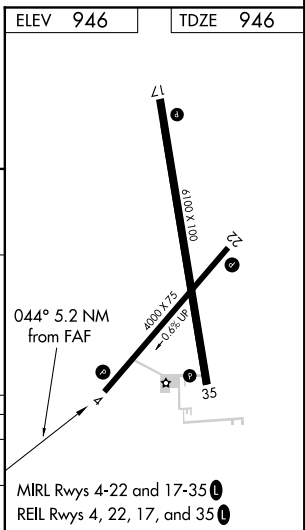
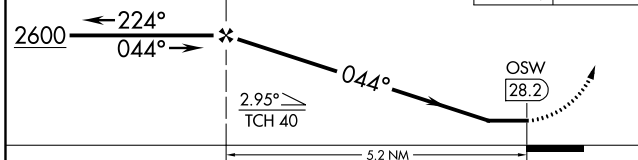
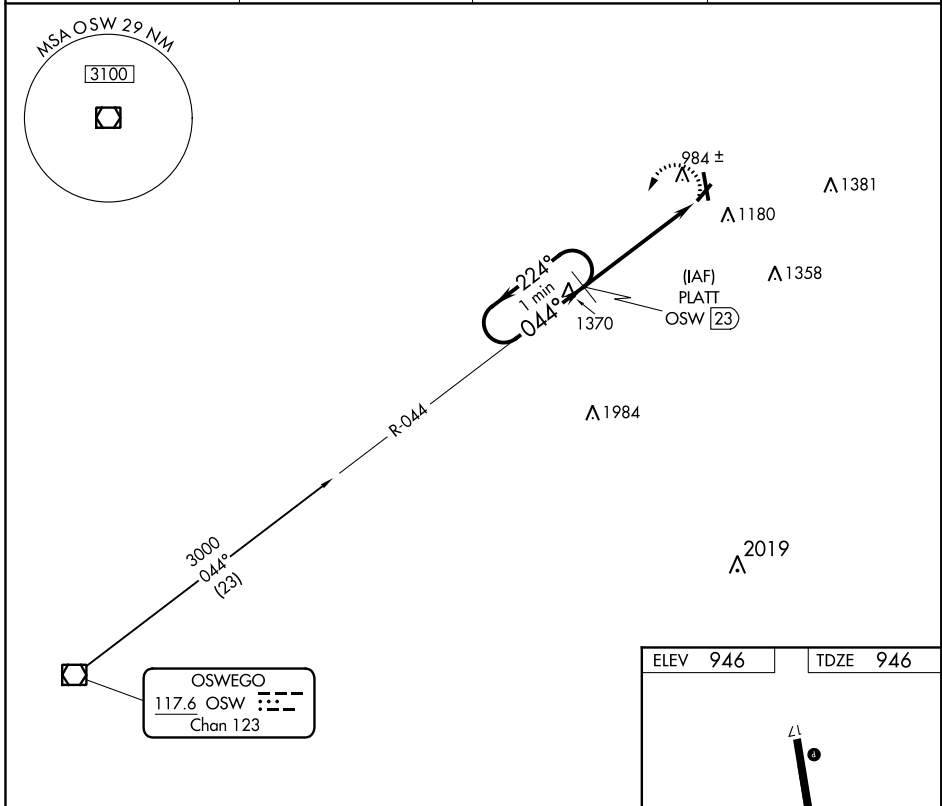
VOR/DME RWY 4

ATKINSON MUNI (PTS)

NA When local altimeter setting not received, use Joplin altimeter setting and increase all MDA 60 feet, increase all Cat C visibility ¼ mile.

MISSED APPROACH: Climbing left turn to 2600 on OSW VOR/DME R-044 to PLATT/OSW 23 DME and hold.

AWOS-3 118.775	KANSAS CITY CENTER 128.6 282.325	GCO 121.725	UNICOM 123.0 (CTAF)
--------------------------	--	-----------------------	-------------------------------



CATEGORY	A	B	C	D
S-4	1680-1 734 (800-1)	1680-1 ¼ 734 (800-1 ¼)	1680-2 734 (800-2)	NA
C CIRCLING	1680-1 734 (800-1)	1680-1 ¼ 734 (800-1 ¼)	1680-2 734 (800-2)	NA

NC-2, 21 MAY 2020 to 18 JUN 2020

NC-2, 21 MAY 2020 to 18 JUN 2020