

WAAS CH <b>53430</b> <b>W04A</b>	APP CRS <b>038°</b>	Rwy Idg <b>4000</b> TDZE <b>946</b> Apt Elev <b>946</b>
--	------------------------	---

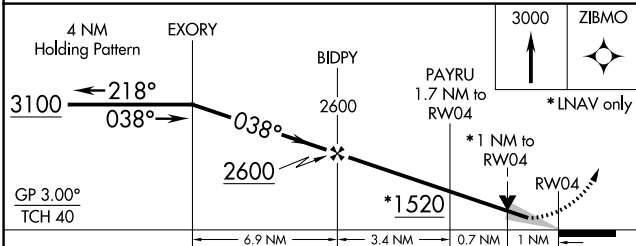
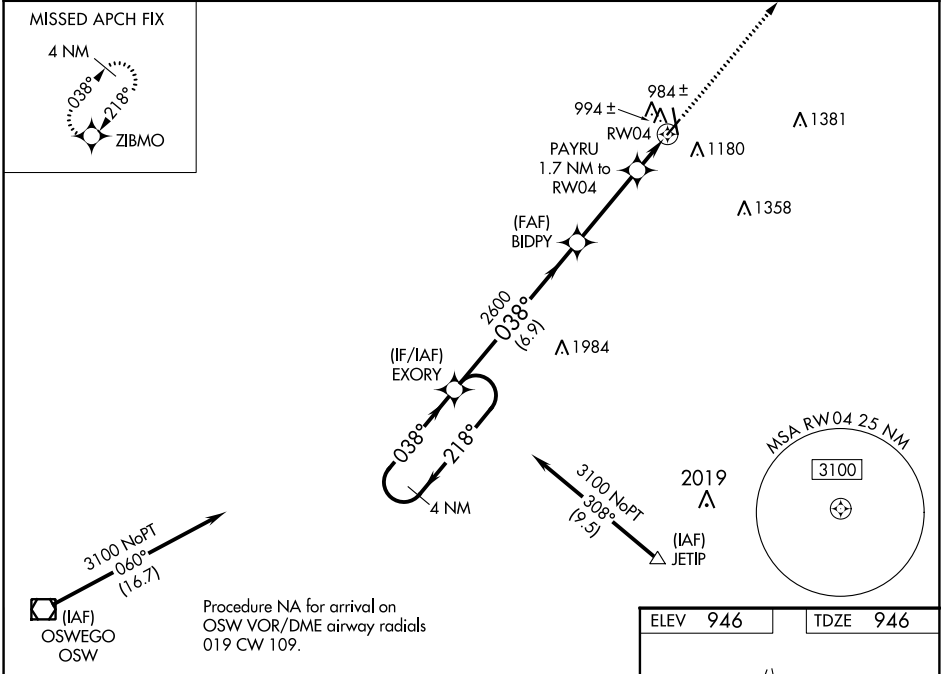
# RNAV (GPS) RWY 4

ATKINSON MUNI (PTS)

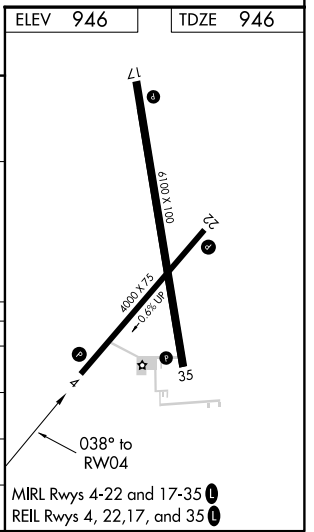
**▼** For uncompensated Baro-VNAV systems, LNAV/VNAV NA below -16°C (4°F) or above 54°C (130°F). DME/DME RNP-0.3 NA. Baro-VNAV and VDP NA with Joplin altimeter setting.  
**▲** When local altimeter setting not received, use Joplin altimeter setting and increase all DA 53 feet and all MDA 60 feet, and increase LPV all Cats, LNAV/VNAV all Cats and LNAV Cat C visibility 1/8 mile, and Circling Cat C visibility 1/4 mile.

MISSED APPROACH:  
Climb to 3000 direct ZIBMO and hold.

AWOS-3 <b>118.775</b>	KANSAS CITY CENTER <b>128.6 282.325</b>	GCO <b>121.725</b>	UNICOM <b>123.0 (CTAF)</b>
--------------------------	--	-----------------------	-------------------------------



CATEGORY	A	B	C	D
LPV DA	1196-7/8	250 (300-7/8)		NA
LNAV/VNAV DA	1196-7/8	250 (300-7/8)		NA
LNAV MDA	1300-1	354 (400-1)		NA
<b>C</b> CIRCLING	1480-1	534 (600-1)	1520-1 1/2 574 (600-1 1/2)	NA



NC-2, 21 MAY 2020 to 18 JUN 2020

NC-2, 21 MAY 2020 to 18 JUN 2020