

WAAS CH 77600 W35A	APP CRS 348°	Rwy Idg 6100 TDZE 929 Apt Elev 946
--	------------------------	---

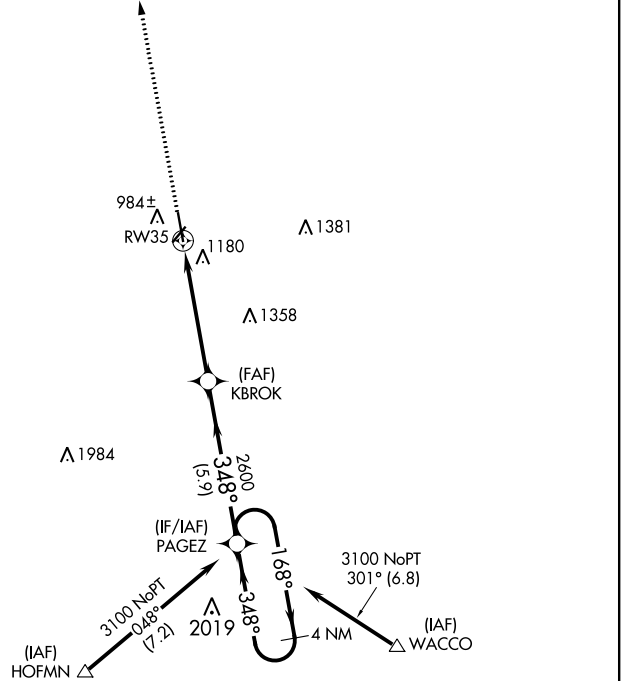
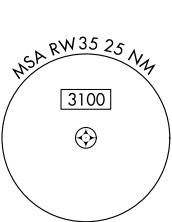
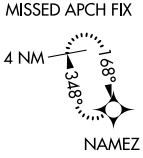
RNAV (GPS) RWY 35

ATKINSON MUNI (PTS)

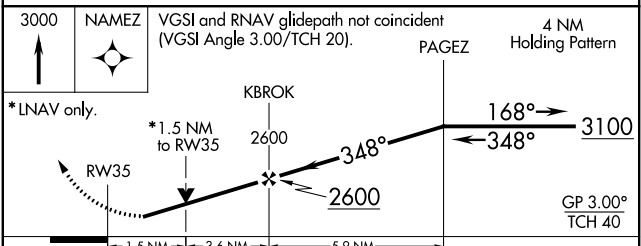
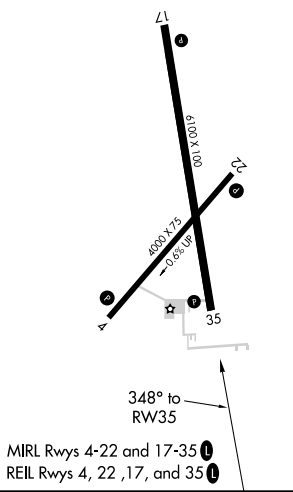
⚠ For uncompensated Baro-VNAV systems, LNAV/VNAV NA below -16°C (4°F) or above 54°C (130°F). Rwy 35 helicopter visibility reduction below ¾ SM NA. DME/DME RNP-0.3 NA.

MISSED APPROACH: Climb to 3000 direct NAMEZ and hold.

AWOS-3 118.775	KANSAS CITY CENTER 128.6 282.325	GCO 121.725	UNICOM 123.0 (CTAF) 0
--------------------------	--	-----------------------	---------------------------------



ELEV 946	TDZE 929
----------	----------



CATEGORY	A	B	C	D
LPV DA	1179-1 250 (300-1)			
LNAV/VNAV DA	1338-1½ 409 (400-1½)			
LNAV MDA	1440-1	511 (500-1)	1440-1¾	511 (500-1¾)
<input checked="" type="checkbox"/> CIRCLING	1480-1	534 (600-1)	1520-1½	1720-2½
			574 (600-1½)	774 (800-2½)

NC-2, 21 MAY 2020 to 18 JUN 2020

NC-2, 21 MAY 2020 to 18 JUN 2020