

WAAS CH 86829 W21A	APP CRS 210°	Rwy Idg TDZE Apt Elev	5204 708 708
--	------------------------	-----------------------------	---

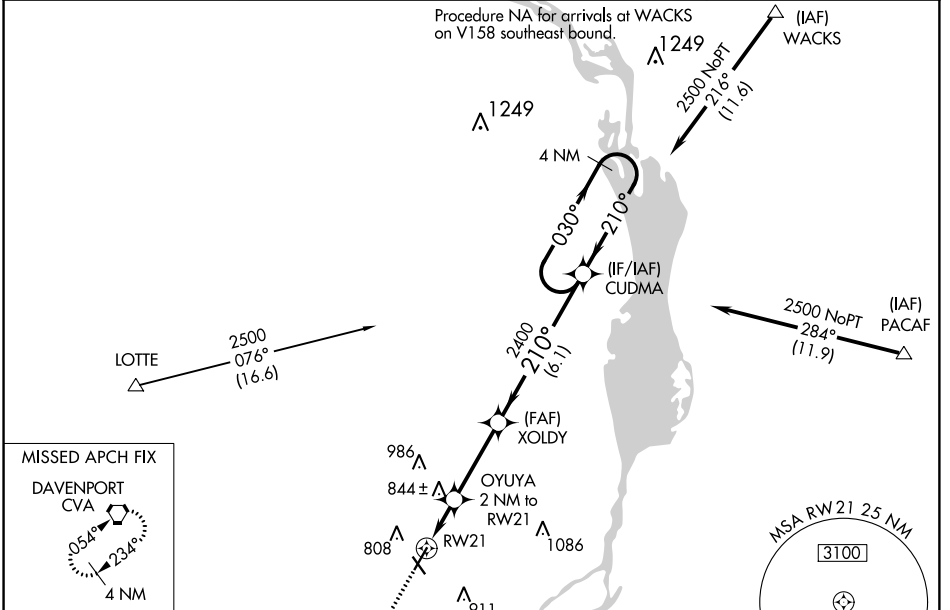
RNAV (GPS) RWY 21

CLINTON MUNI (CWI)

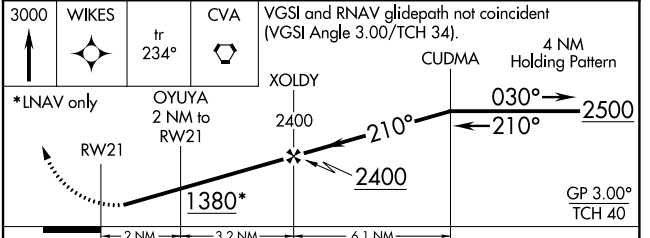
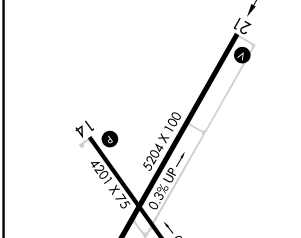
⚠ When VGSI inop, Circling Rwy 14 and 32 NA at night. Baro-VNAV NA when using Davenport altimeter setting. For uncompensated Baro-VNAV systems, LNAV/VNAV NA below -16°C (4°F) or above 54°C (130°F). When VGSI inop, Straight-In/Circling Rwy 21 procedure NA at night. DME/DME RNP-0.3 NA. Visibility reduction by helicopters NA. When local altimeter setting not received, use Davenport altimeter setting: increase all DA 47 feet and all MDA 60 feet. Increase LNAV Cat C visibility ¼ mile.

⚠ MISSED APPROACH: Climb to 3000 direct WIKES and on track 234° to CVA VORTAC and hold.

AWOS-3PT 125.525	QUAD CITY APP CON ★ 125.95 257.8	CLNC DEL 118.5	UNICOM 122.8 (CTAF)
----------------------------	--	--------------------------	-------------------------------



ELEV 708	D	TDZE 708
----------	----------	----------



CATEGORY	A	B	C	D
LPV DA	958-1 250 (300-1)			NA
LNAV/VNAV DA	958-1 250 (300-1)			NA
LNAV MDA	1100-1 392 (400-1)	1100-1 1/8 392 (400-1 1/8)		NA
CIRCLING	1140-1 432 (500-1)	1240-1 532 (600-1)	1240-1 1/2 532 (600-1 1/2)	NA

REIL Rwy 14 and 21 **Ⓛ**
MIRL Rwy 14-32 **Ⓛ**
HIRL Rwy 3-21 **Ⓛ**

NC-3, 21 MAY 2020 to 18 JUN 2020

NC-3, 21 MAY 2020 to 18 JUN 2020