

WAAS CH <b>86729</b> <b>W14A</b>	APP CRS <b>144°</b>	Rwy Idg TDZE Apt Elev	<b>4200</b> <b>701</b> <b>708</b>
--	------------------------	-----------------------------	---

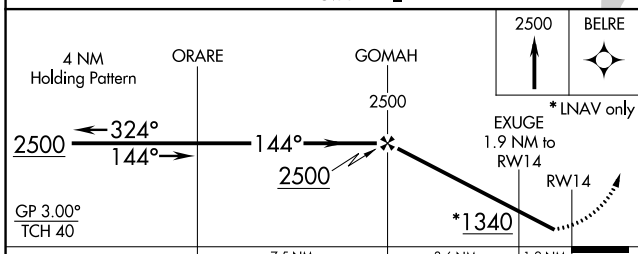
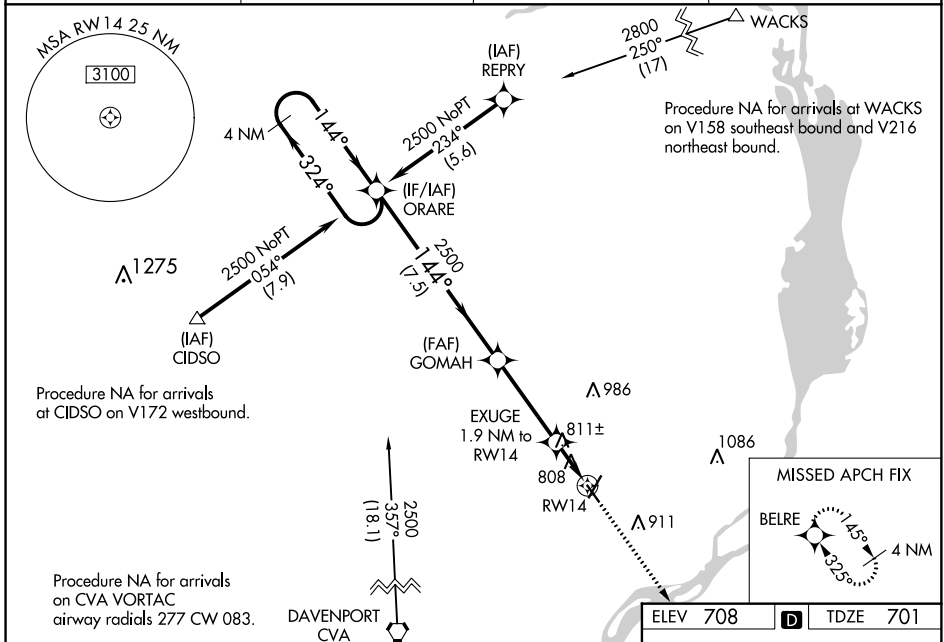
# RNAV (GPS) RWY 14

CLINTON MUNI (CWI)

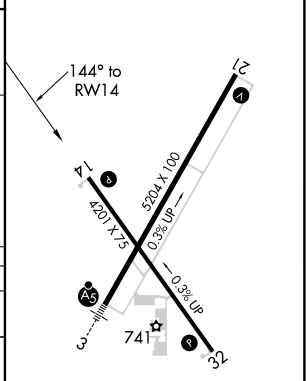
**⚠** When VGSI inop, Circling Rwy 32 NA at night. Baro-VNAV NA when using Davenport altimeter setting. For uncompensated Baro-VNAV systems, LNAV/VNAV NA below -16°C (4°F) or above 54°C (130°F). When VGSI inop, Straight-In/Circling Rwy 14 procedure NA at night. DME/DME RNP-0.3 NA. Visibility reduction by helicopters NA. When local altimeter setting not received, use Davenport altimeter setting and increase all DA 47 feet and all MDA 60 feet; increase LNAV visibility Cat C ¼ mile.

**⚠** MISSED APPROACH: Climb to 2500 direct BELRE and hold.

AWOS-3PT <b>125.525</b>	QUAD CITY APP CON * <b>125.95 257.8</b>	CLNC DEL <b>118.5</b>	UNICOM <b>122.8</b> (CTAF)
----------------------------	--	--------------------------	-------------------------------



ELEV 708	<b>D</b> TDZE 701
----------	-------------------



CATEGORY	A	B	C	D
LPV DA		951-1 250 (300-1)		NA
LNAV/VNAV DA		968-1 267 (300-1)		NA
LNAV MDA		1080-1 379 (400-1)		NA
CIRCLING	1140-1 432 (500-1)	1240-1 532 (600-1)	1240-1½ 532 (600-1½)	NA

REIL Rwy 14 and 21 **Ⓛ**  
MIRL Rwy 14-32 **Ⓛ**  
HIRL Rwy 3-21 **Ⓛ**

NC-3, 21 MAY 2020 to 18 JUN 2020

NC-3, 21 MAY 2020 to 18 JUN 2020