

VORTAC LAL 116.0 Chan 107	APP CRS 256°	Rwy Idg 8499 TDZE 142 Apt Elev 142
---	------------------------	---

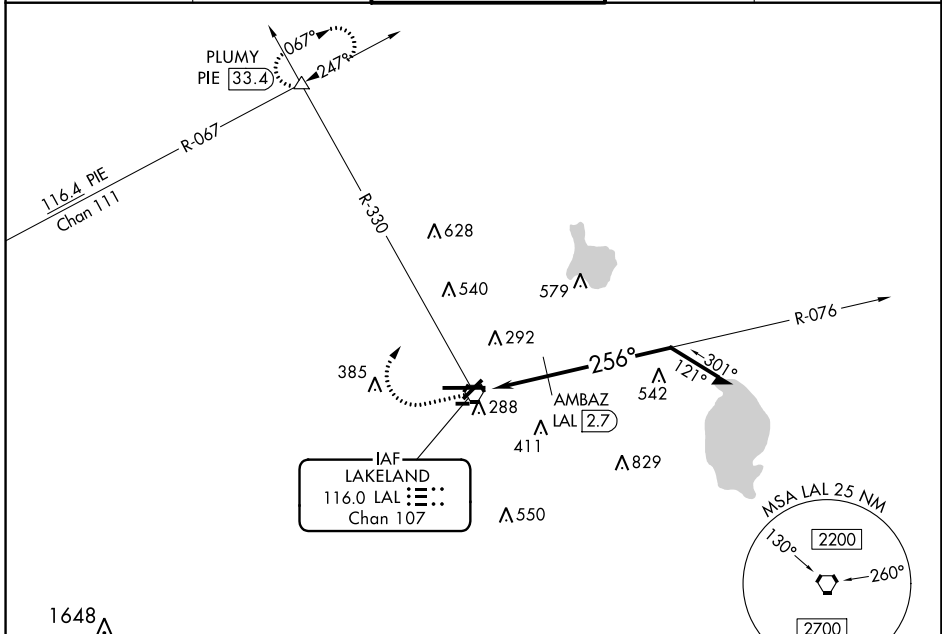
VOR RWY 27

LAKELAND LINDER INTL (LAL)

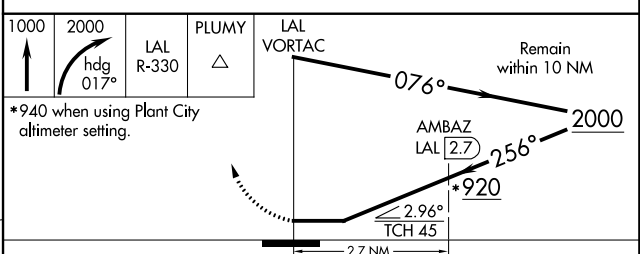
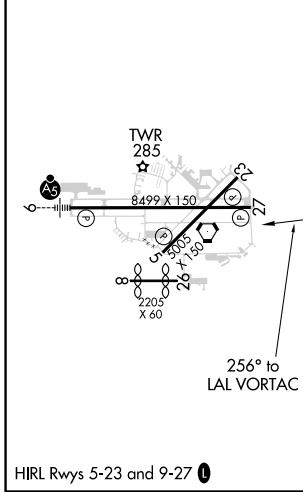
⚠ When local altimeter setting not received, use Plant City altimeter setting and increase all MDA 20 feet.
⚠ Circling NA to Rws 8 and 26.

MISSED APPROACH: Climb to 1000 then climbing right turn to 2000 on heading 017° and on LAL VORTAC R-330 to PLUMY INT/PIE 33.4 DME and hold.

ATIS 118.025	TAMPA APP CON 120.65 290.3	LAKELAND TOWER ★ 124.5 (CTAF) 236.775	GND CON 121.4	UNICOM 122.95
------------------------	--------------------------------------	---	-------------------------	-------------------------



ELEV 142	D	TDZE 142
-----------------	----------	-----------------



CATEGORY	A	B	C	D
S-27	920-1 778 (800-1)	920-1¼ 778 (800-1¼)	920-2½	778 (800-2½)
CIRCLING	920-1 778 (800-1)	920-1¼ 778 (800-1¼)	920-2½	778 (800-2½)
AMBAZ FIX MINIMUMS				
S-27	540-1	398 (400-1)	540-1⅛	398 (400-1⅛)
CIRCLING	600-1 458 (500-1)	660-1 518 (600-1)	660-1½ 518 (600-1½)	700-2 558 (600-2)

SE-3, 21 MAY 2020 to 18 JUN 2020

SE-3, 21 MAY 2020 to 18 JUN 2020