

RNAV (GPS) RWY 9

LAKELAND LINDER INTL (LAL)

| | | |
|--|------------------------|---|
| WAAS CH 78305 W09A | APP CRS 094° | Rwy Idg 8414 TDZE 132 Apt Elev 142 |
|--|------------------------|---|

RNP APCH:

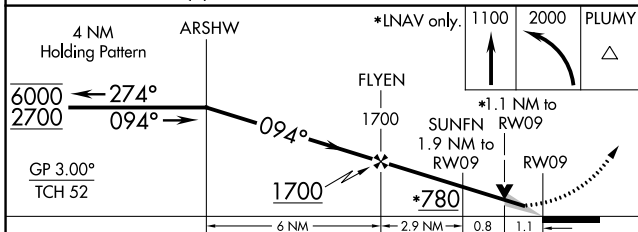
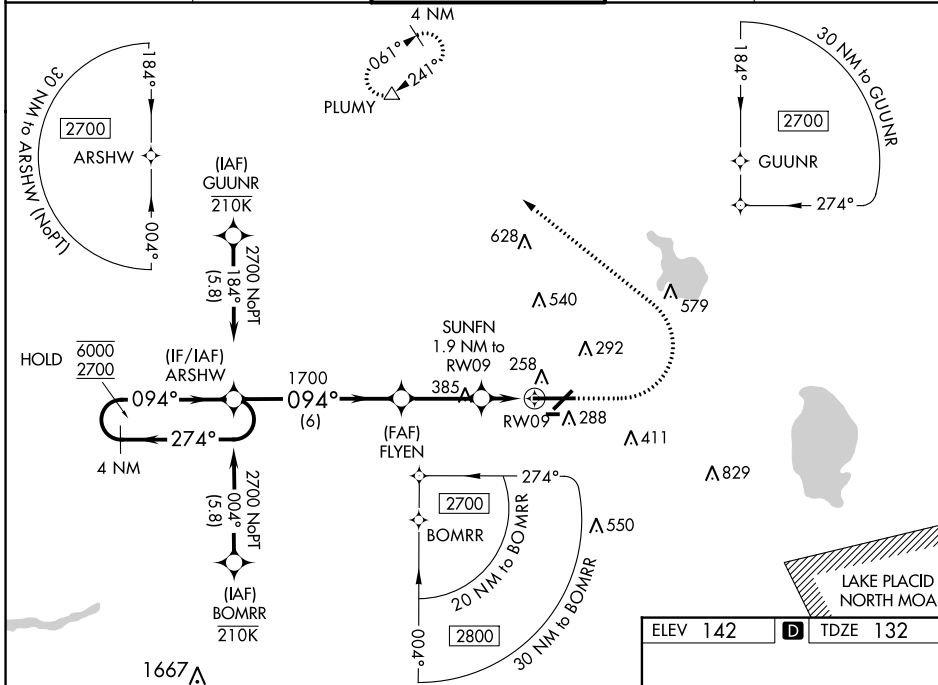
▼ For uncompensated Baro-VNAV systems, LNAV/VNAV NA below -15°C or above 54°C. Baro-VNAV and VDP NA when using Plant City altimeter setting. When local altimeter setting not received, use Plant City altimeter setting and increase all DA/MDA 20 feet, increase LNAV/VNAV all Cats visibility and LNAV Cats C/D visibility 1/8 SM. For inop ALS, increase LNAV/VNAV all Cats visibility to 1/8 SM. For inop ALS when using Plant City altimeter setting, increase LNAV/VNAV all Cats visibility to 1 SM. Circling NA to Rwy's 8 and 26.

MALSR

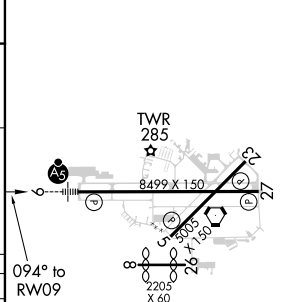


MISSED APPROACH:
Climb to 1100 then climbing left turn to 2000 direct PLUMY and hold.

| | | | | |
|------------------------|--------------------------------------|---|-------------------------|-------------------------|
| ATIS 118.025 | TAMPA APP CON 120.65 290.3 | LAKELAND TOWER ★ 124.5 (CTAF) 236.775 | GND CON 121.4 | UNICOM 122.95 |
|------------------------|--------------------------------------|---|-------------------------|-------------------------|



| | |
|----------|----------|
| ELEV 142 | TDZE 132 |
|----------|----------|



| CATEGORY | A | B | C | D |
|--------------|-----------------------|-------------------|---------------------------|-------------------|
| LPV DA | | 332-1/2 | 200 (200-1/2) | |
| LNAV/VNAV DA | | 439-1/2 | 307 (300-1/2) | |
| LNAV MDA | 520-1/2 388 (400-1/2) | | 520-5/8 388 (400-5/8) | |
| CIRCLING | 600-1 458 (500-1) | 660-1 518 (600-1) | 660-1 1/2 518 (600-1 1/2) | 700-2 558 (600-2) |

HIRL Rwy's 5-23 and 9-27

SE-3, 21 MAY 2020 to 18 JUN 2020

SE-3, 21 MAY 2020 to 18 JUN 2020