

RNAV (GPS) RWY 5

LAKELAND LINDER INTL (LAL)

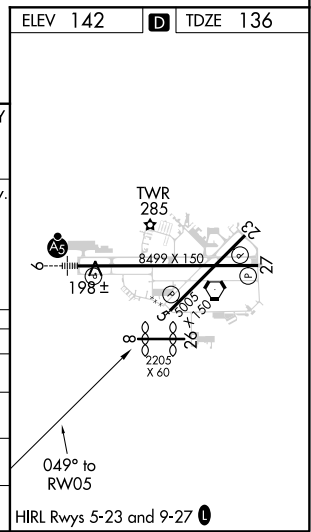
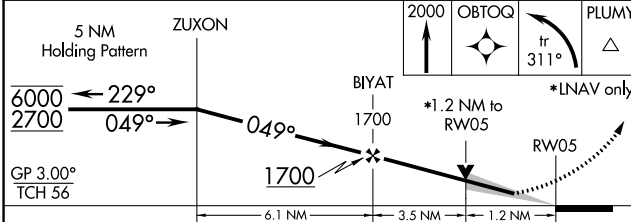
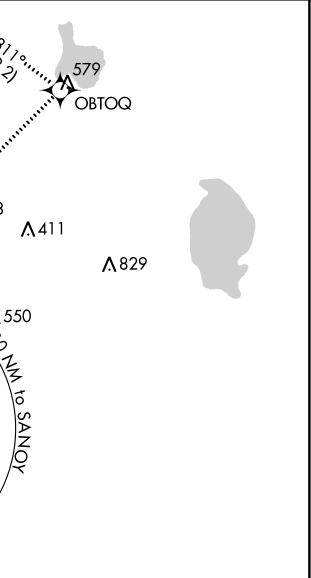
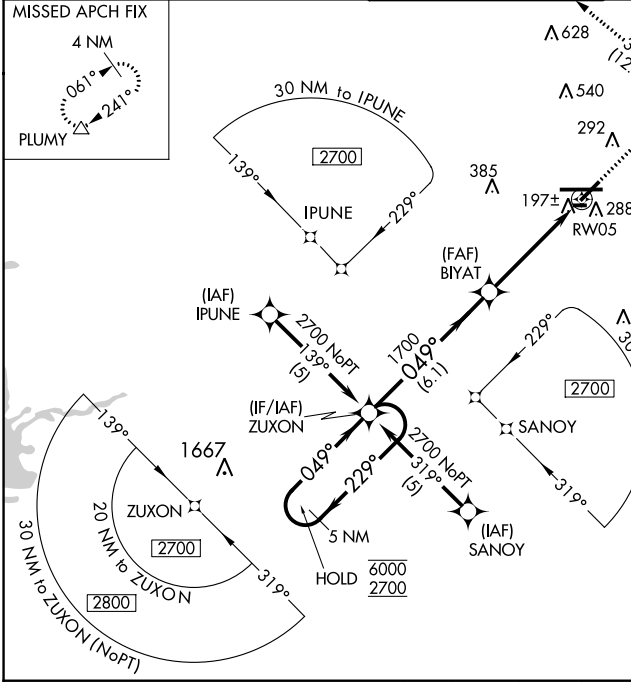
WAAS CH 42805 W05A	APP CRS 049°	Rwy Idg TDZE 136 Apt Elev 142	5005
--	------------------------	---	-------------

RNP APCH.

⚠ For uncompensated Baro-VNAV systems, LNAV/VNAV NA below -1.5°C or above 54°C. When local altimeter setting not received, use Plant City altimeter setting and increase all DA/MDA 20 feet and LNAV Cat C/D visibility 1/8 SM. Baro-VNAV and VDP NA when using Plant City altimeter setting. Circling NA to Rwy 8, 26.

MISSED APPROACH: Climb to 2000 direct OBTOQ and left turn on track 311° to PLUMY and hold.

ATIS 118.025	TAMPA APP CON 120.65 290.3	LAKELAND TOWER ★ 124.5 (CTAF) 0 236.775	GND CON 121.4	UNICOM 122.95
------------------------	--------------------------------------	---	-------------------------	-------------------------



CATEGORY	A	B	C	D
LPV DA		336-3/4	200 (200-3/4)	
LNAV/VNAV DA		505-1/4	369 (400-1/4)	
LNAV MDA	560-1	424 (500-1)	560-1/4	424 (500-1/4)
CIRCLING	600-1 458 (500-1)	660-1 518 (600-1)	660-1/2 518 (600-1/2)	700-2 558 (600-2)

SE-3, 21 MAY 2020 to 18 JUN 2020

SE-3, 21 MAY 2020 to 18 JUN 2020