

LOC/DME I-LAL 110.1 Chan 38	APP CRS 094°	Rwy Idg TDZE 132 Apt Elev 142	8414
---	------------------------	---	-------------

ILS RWY 9 (SA CAT I & II)

LAKELAND UNDER INTL (LAL)

DME required.

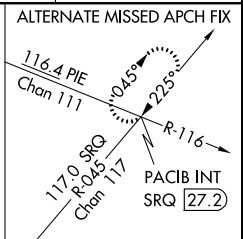
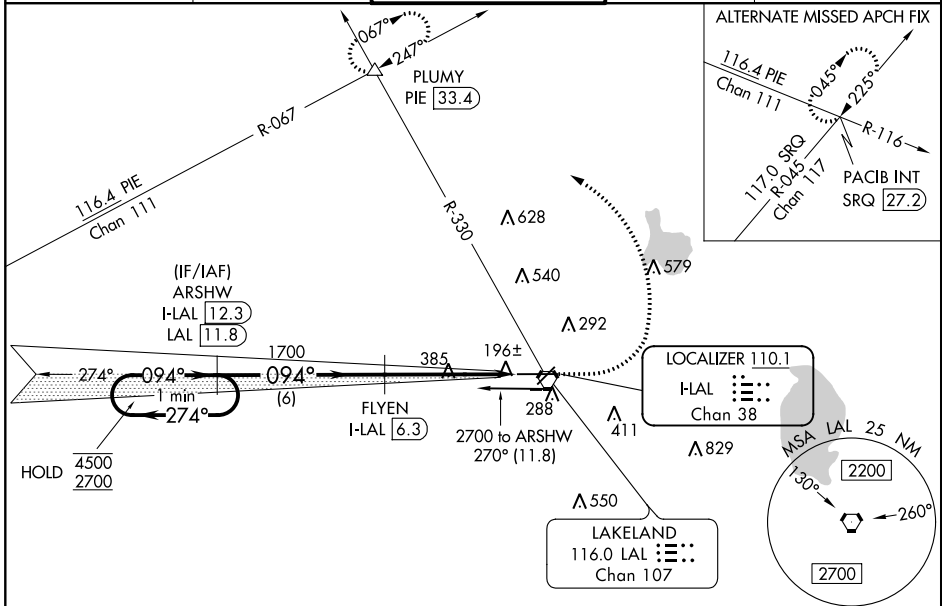
SA CAT I: Requires specific OPSPEC, MSPEC or LOA approval and use of HUD to DH.

SA CAT II: Reduced lighting: Requires specific OPSPEC, MSPEC or LOA approval and use of HUD to touchdown. Autopilot coupled approach NA. SA CAT I/II: Procedure NA when tower closed.

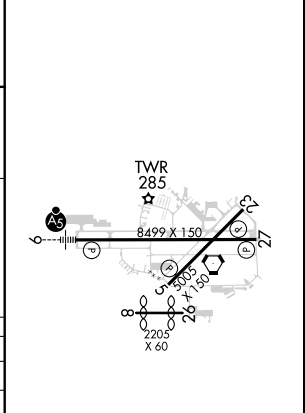
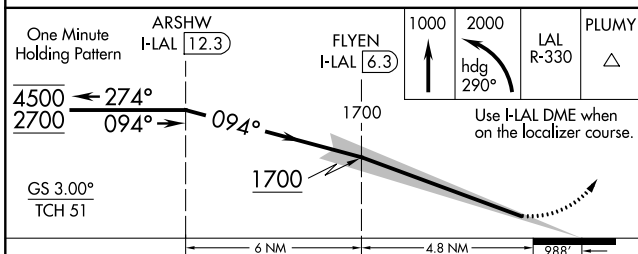
MALSR

MISSED APPROACH: Climb to 1000 then climbing left turn to 2000 on heading 290° and on LAL VORTAC R-330 to PLUMY INT/PIE 33.4 DME and hold.

ATIS 118.025	TAMPA APP CON 120.65 290.3	LAKELAND TOWER ★ 124.5 (CTAF) 236.775	GND CON 121.4	UNICOM 122.95
------------------------	--------------------------------------	---	-------------------------	-------------------------



ELEV 142	D	TDZE 132
----------	----------	----------



CATEGORY	A	B	C	D
S-ILS 9	SA CAT I	RA 152/14	150	DA 282
S-ILS 9	SA CAT II	RA 102/12	100	DA 232

SA CATEGORY I & II ILS SPECIAL AIRCREW & AIRCRAFT CERTIFICATION REQUIRED

HIRL Rwy 5-23 and 9-27

SE-3, 21 MAY 2020 to 18 JUN 2020

SE-3, 21 MAY 2020 to 18 JUN 2020