

VOR/DME OTH 112.1 Chan 58	APP CRS 073°	Rwy Idg 5320 TDZE 16 Apt Elev 17
---	------------------------	---

VOR RWY 5

SOUTHWEST OREGON RGNL (OTH)

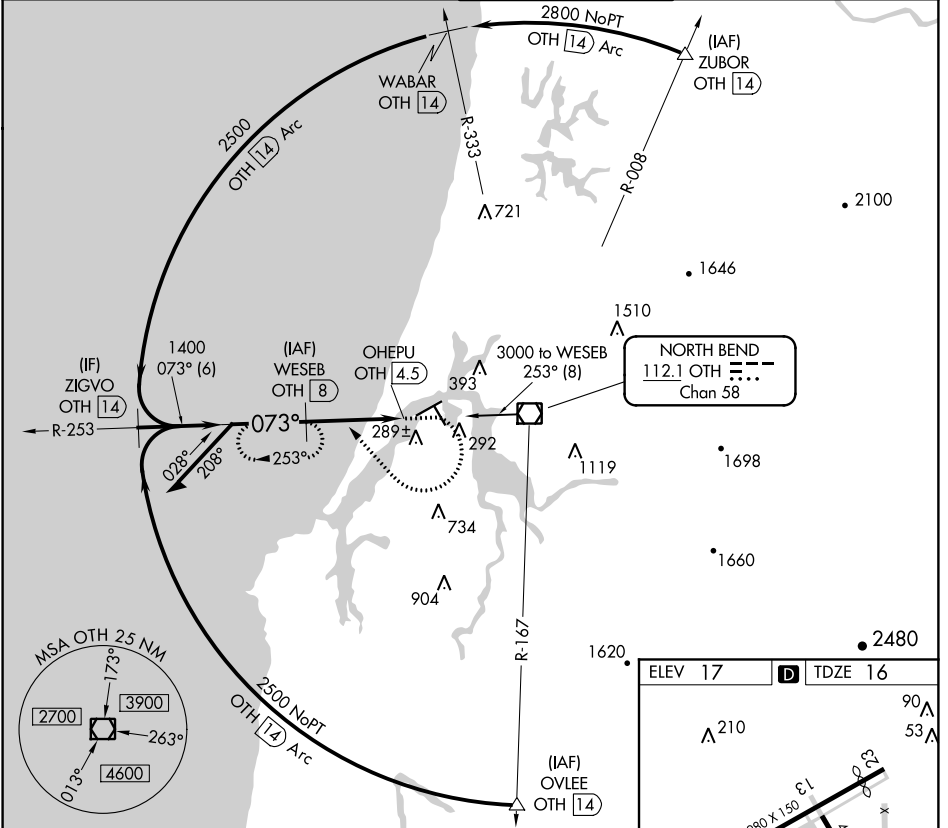
DME required.

⚠ Circling to Rwy 13, 31 NA at night.
⚠ Inoperative table does not apply.

MALSR

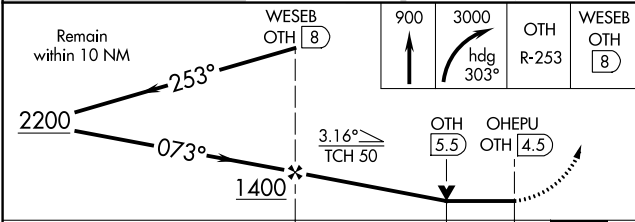
MISSED APPROACH: Climb to 900 then climbing right turn to 3000 on heading 303° and on OTH VOR/DME R-253 to WESEB/8 DME and hold, continue climb-in-hold to 3000.

AWOS-3PT 135.075	SEATTLE CENTER 127.55 254.35	NORTH BEND TOWER* 118.45 (CTAF)	GND CON 127.1
----------------------------	--	---	-------------------------



NW-1, 21 MAY 2020 to 18 JUN 2020

NW-1, 21 MAY 2020 to 18 JUN 2020



ELEV 17	TDZE 16
---------	---------

HIRL Rwy 5-23

MIRL Rwy 13-31

REIL Rws 13, 23 and 31

CATEGORY	A	B	C	D
S-5	540-1	524 (600-1)	540-1½	524 (600-1½)
C CIRCLING	680-1 663 (700-1)	820-1 803 (900-1)	1100-3 1083 (1100-3)	1160-3 1143 (1200-3)