

WAAS CH <b>56628</b> <b>W19A</b>	APP CRS <b>192°</b>	Rwy Idg TDZE Apt Elev	<b>4506</b> <b>3146</b> <b>3150</b>
--	------------------------	-----------------------------	---

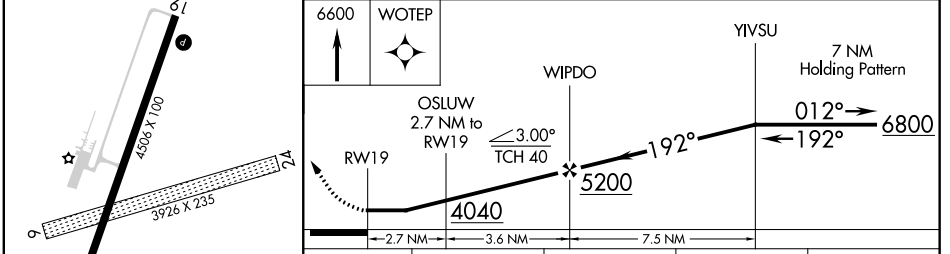
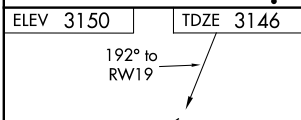
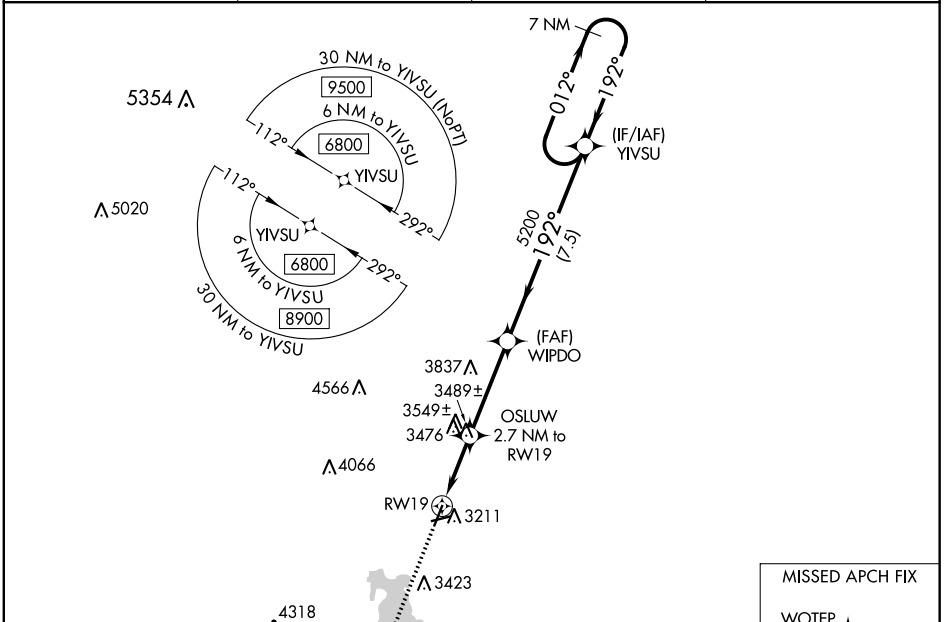
# RNAV (GPS) RWY 19

HOT SPRINGS MUNI (HSR)

**▼** Rwy 19 helicopter visibility reduction ¾ SM NA. DME/DME RNP-0.3 NA.  
**▲ NA** Circling NA to Rwy 6 and 24. Circling NA west of Rwy 1-19.  
 Use Chadron, NE altimeter setting, when not received use Rapid City Rgnl altimeter setting and increase all MDA 20 feet, increase LNAV Cat C and D visibility ½ SM.

MISSED APPROACH: Climb to 6600 direct WOTEP and hold.

CDR ASOS <b>118.05</b>	DENVER CENTER <b>127.95 338.2</b>	GCO <b>121.725</b>	AUNICOM <b>122.8 (CTAF) 0</b>
---------------------------	--------------------------------------	-----------------------	----------------------------------



CATEGORY	A	B	C	D
LP MDA	3840-1 694 (700-1)		3840-2 694 (700-2)	
LNAV MDA	3900-1 754 (800-1)	3900-1¼ 754 (800-1¼)	3900-2 754 (800-2)	
<b>C</b> CIRCLING	3900-1 750 (800-1)		3980-2½ 830 (900-2½)	4100-3 950 (1000-3)

NC-1, 21 MAY 2020 to 18 JUN 2020

NC-1, 21 MAY 2020 to 18 JUN 2020