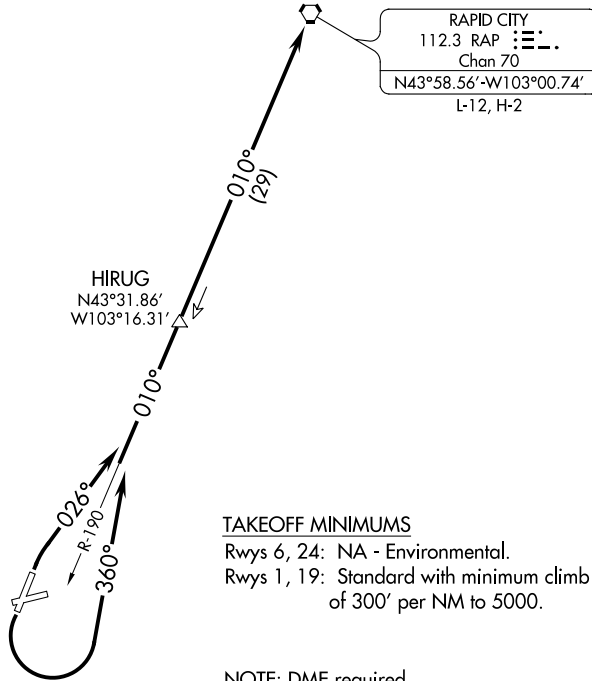


**TOP ALTITUDE:  
7000**



TAKEOFF MINIMUMS

Rwys 6, 24: NA - Environmental.  
Rwys 1, 19: Standard with minimum climb  
of 300' per NM to 5000.

NOTE: DME required.

NOTE: Chart not to scale.



DEPARTURE ROUTE DESCRIPTION

TAKEOFF RUNWAY 1: Climb heading 026° to intercept RAP VORTAC R-190 to RAP VORTAC, thence. . . .

TAKEOFF RUNWAY 19: Climbing left turn heading 360° to intercept RAP VORTAC R-190 to RAP VORTAC, thence. . . .

. . . .maintain 7000, expect filed altitude 10 minutes after departure.