

APP CRS	Rwy Idg	9007
200°	TDZE	2977
	Apt Elev	2977

RNAV (RNP) RWY 20

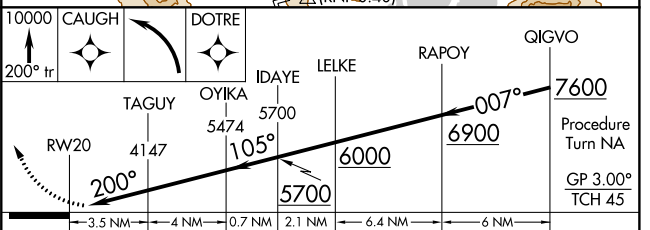
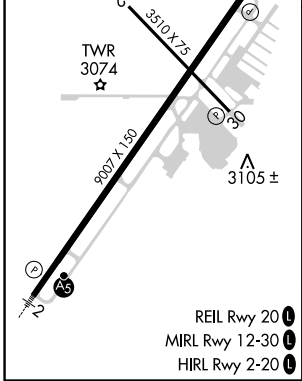
GLACIER PARK INTL (GPI)

RF and GPS required. For uncompensated Baro-VNAV systems, procedure NA below -21°C (-5°F) or above 43°C (109°F). Visibility reduction by helicopters NA.

MISSED APPROACH: Climb to 10000 via 200° track to CAUGH and via left turn to DOTRE, and via left turn to DEBRE, and via 128° track to ANGIL and hold, continue climb-in-hold to 10000.

*Missed approach requires minimum climb of 235 feet per NM to 6900.

ATIS	SALT LAKE CENTER	GLACIER TOWER*	GND CON	UNICOM
132.625	133.4 285.4	124.55 (CTAF) 0	121.6	122.95



	CAUGH	DOTRE	IDAYE	LELKE	RAPOY	QIGVO
	10000	5700	5700	6000	6900	7600
	200° tr	105°	105°	105°	105°	007°
	3.5 NM	4 NM	0.7 NM	2.1 NM	6.4 NM	6 NM
CATEGORY	A	B	C	D		
RNP 0.10 DA*		3344-1¼	367 (400-1¼)			
RNP 0.30 DA*		3446-1¾	469 (500-1¾)			
RNP 0.30 DA		3662-2½	685 (700-2½)			

AUTHORIZATION REQUIRED

NW-1, 21 MAY 2020 to 18 JUN 2020

NW-1, 21 MAY 2020 to 18 JUN 2020