

NW-1, 21 MAY 2020 to 18 JUN 2020

DEPARTURE ROUTE DESCRIPTION

TAKEOFF RUNWAY 2: Climb heading 020° to intercept course 290° to cross KECEK at or above 7000 and at or below 230K, then on track 216° to cross EEVEL at or above 9000, then on track 167° to KNEVL, then on track 173° to KILLY, thence . . .

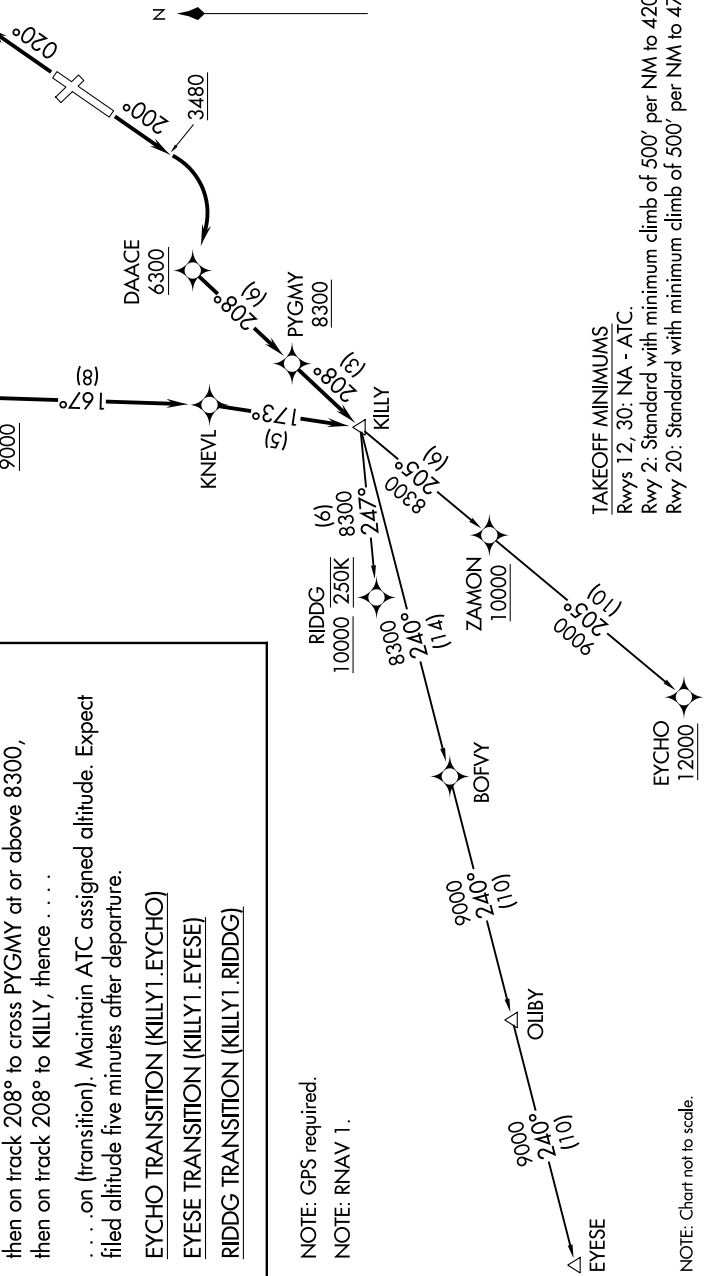
TAKEOFF RUNWAY 20: Climb heading 200° to 3480, then climbing right turn direct to cross DAAACE at or above 6300, then on track 208° to cross PYGMY at or above 8300, then on track 208° to KILLY, thence . . .

. . . on (transition). Maintain ATC assigned altitude. Expect filed altitude five minutes after departure.

EYCHO TRANSITION (KILLY1.EYCHO)
EYESE TRANSITION (KILLY1.EYESE)
RIDDG TRANSITION (KILLY1.RIDDG)

**TOP ALTITUDE:
ASSIGNED BY ATC**

- ATIS 132.625
- GND CON 121.6
- GLACIER TOWER* 124.55
- GREAT FALLS RADIO 122.5
- SALT LAKE CENTER 133.4 285.4



NOTE: GPS required.
 NOTE: RNAV 1.

TAKEOFF MINIMUMS
 Rwy 12, 30: NA - ATC.
 Rwy 2: Standard with minimum climb of 500' per NM to 4200.
 Rwy 20: Standard with minimum climb of 500' per NM to 4700.

NOTE: Chart not to scale.

NW-1, 21 MAY 2020 to 18 JUN 2020