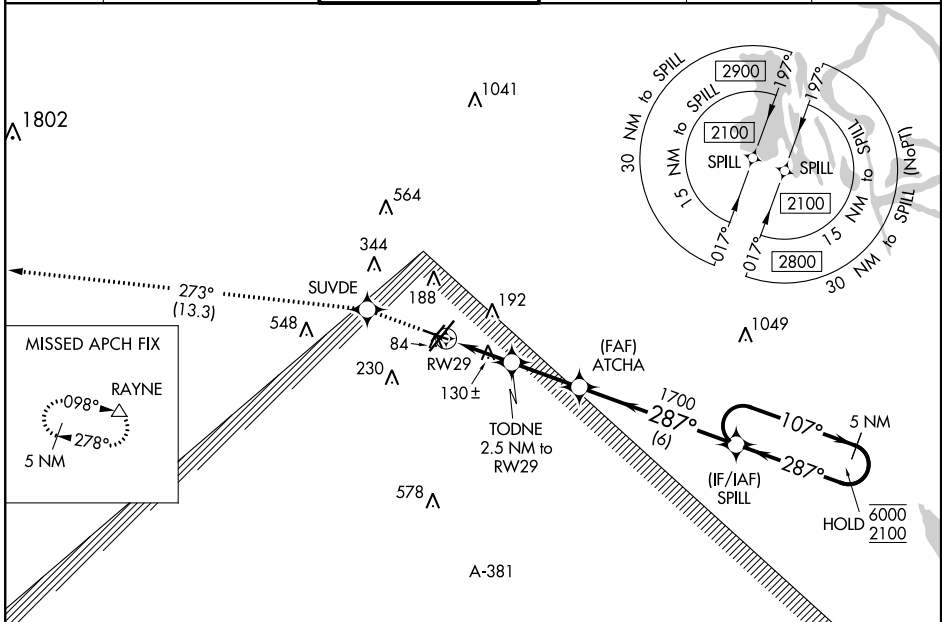


WAAS CH 45703 W29A	APP CRS 287°	Rwy Ldg TDZE 42 Apt Elev 42
--	------------------------	---

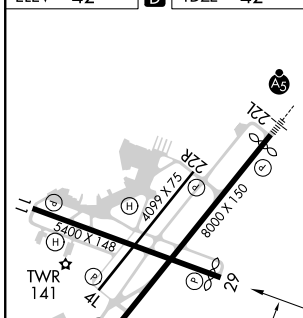
RNAV (GPS) RWY 29

LAFAYETTE RGNL/PAUL FOURNET FIELD (L.F.T)

RNP APCH.		MISSED APPROACH: Climb to 2800 direct SUVDE and on track 273° to RAYNE and hold.			
<p>Rwy 29 helicopter visibility reduction below $\frac{3}{4}$ SM NA. For uncompensated Baro-VNAV systems, LNAV/VNAV NA below -2°C or above 54°C.</p>		<p>ATIS 134.05</p>		<p>LAFAYETTE APP CON ★ 121.1 363.0</p>	
<p>LAFAYETTE TOWER ★ 118.5 (CTAF) 0 257.8</p>		<p>GND CON 121.8</p>		<p>CLNC DEL 125.55</p>	
				<p>UNICOM 122.95</p>	



ELEV 42	D	TDZE 42
---------	----------	---------



REIL Rwy 4L, 4R, 11, 22R and 29 MIRL Rwy 11-29 and 4L-22R HIRL Rwy 4R-22L

2800	SUVDE	tr 273°	RAYNE	5 NM Holding Pattern
*LNAV only.			TODNE 2.5 NM to RW29	ATCHA 1700
*0.9 NM to RW29			*880	1700
0.9		1.6	2.6 NM	6 NM
SPILL	107°	287°	6000	2100
GP 3.00° TCH 51				
CATEGORY	A	B	C	D
LPV DA		292- $\frac{3}{4}$	250 (300- $\frac{3}{4}$)	
LNAV/VNAV DA		292- $\frac{3}{4}$	250 (300- $\frac{3}{4}$)	
LNAV MDA		380-1	338 (400-1)	
C CIRCLING	500-1 458 (500-1)	580-1 538 (600-1)	700-1 $\frac{3}{4}$ 658 (700-1 $\frac{3}{4}$)	700-2 658 (700-2)

SC-4, 21 MAY 2020 to 18 JUN 2020

SC-4, 21 MAY 2020 to 18 JUN 2020