

# RNAV (GPS) RWY 28

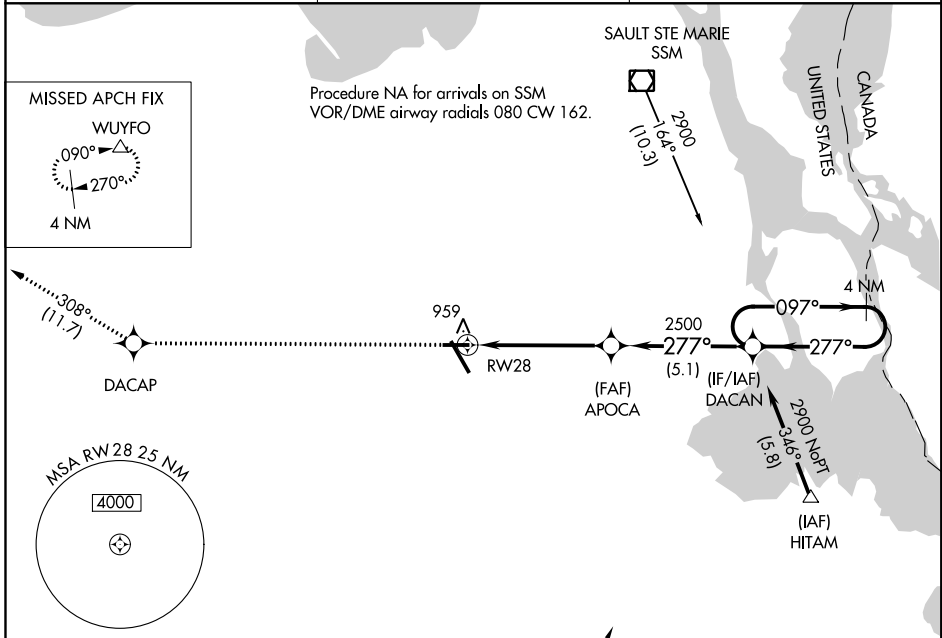
CHIPPEWA COUNTY INTL (CIU)

APP CRS <b>277°</b>	Rwy Idg TDZE Apt Elev	<b>5000</b> <b>799</b> <b>799</b>
------------------------	-----------------------------	---

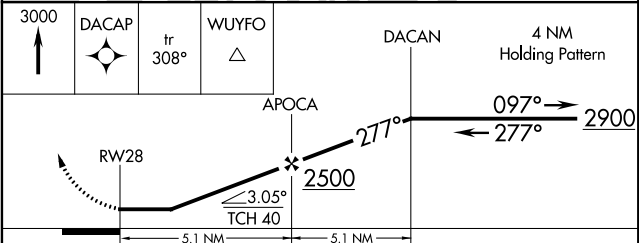
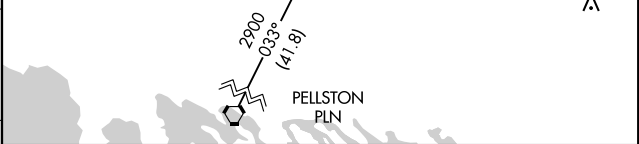
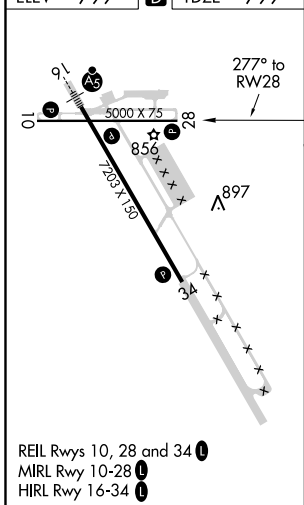
**⚠** DME/DME RNP-0.3 NA. Helicopter visibility reduction below ¾ SM NA. When local altimeter setting not received, use Sault Ste Marie Muni/ Sanderson Field altimeter setting and increase all MDA 60 feet, increase LNAV and Circling visibility Cat C/D ¼ mile. Night landing: Rwy 28 NA.

**MISSED APPROACH:** Climb to 3000 direct DACAP and track 308° to WUYFO and hold.

AWOS-3PT <b>127.575</b>	TORONTO CENTER <b>132.65 344.5</b>	UNICOM <b>123.0 (CTAF)</b>
----------------------------	---------------------------------------	-------------------------------



ELEV 799	<b>D</b>	TDZE 799
----------	----------	----------



CATEGORY	A	B	C	D
LNAV MDA	1220-1	421 (500-1)	1220-1½	421 (500-1½)
CIRCLING	1260-1	461 (500-1)	1260-1½ 461 (500-1½)	1360-2 561 (600-2)

EC-1, 21 MAY 2020 to 18 JUN 2020

EC-1, 21 MAY 2020 to 18 JUN 2020