

(SAALR.SAALR2) 17173

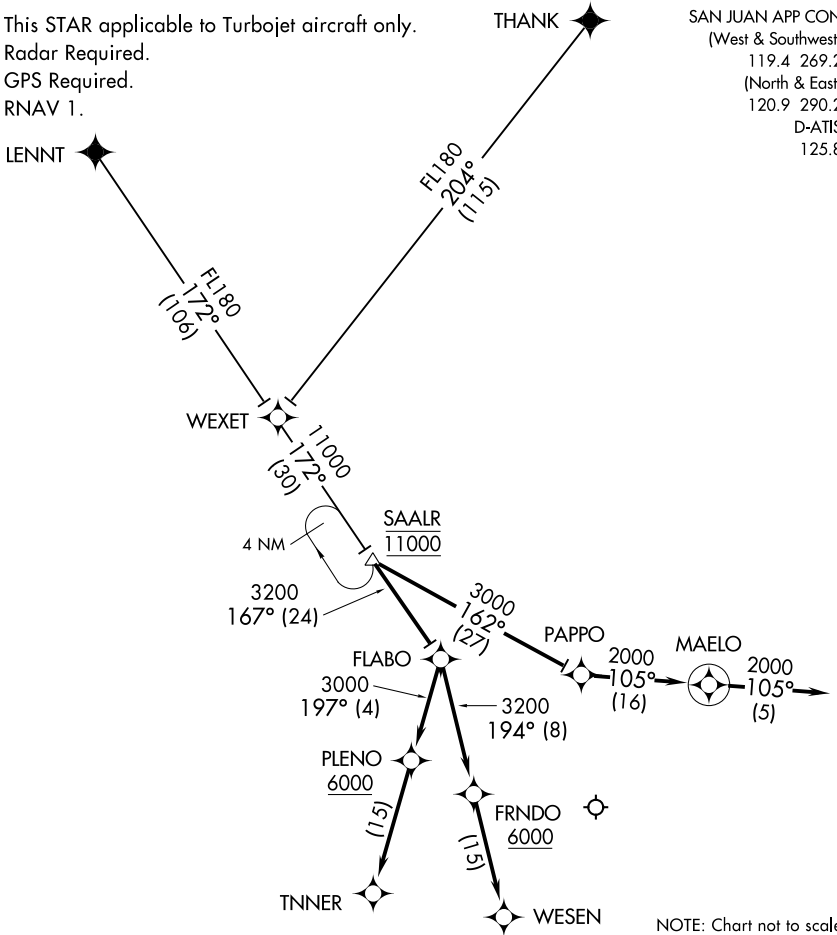
AL-784 (FAA)

LUIS MUNOZ MARIN INTL
SAN JUAN, PUERTO RICO

SAALR TWO ARRIVAL (RNAV)

NOTE: This STAR applicable to Turbojet aircraft only.
NOTE: Radar Required.
NOTE: GPS Required.
NOTE: RNAV 1.

SAN JUAN APP CON
(West & Southwest)
119.4 269.2
(North & East)
120.9 290.2
D-ATIS
125.8



ARRIVAL ROUTE DESCRIPTION

LENNT TRANSITION (LENNT.SAALR2):

THANK TRANSITION (THANK.SAALR2):

From WEXET on track 172° to SAALR, then via assigned runway transition.

Landing East Rwy 08: From over SAALR on track 167° to FLABO, then on track 194° to FRNDO, then on track 194° to WESEN.

Landing East Rwy 10: From over SAALR on track 167° to FLABO, then on track 197° to PLENO, then on track 197° to TNNER.

Landing West Rwy 26/28: From over SAALR on track 162° to PAPP0, then on track 105° to MAELO, then on heading 105°. Expect radar vectors to final approach course.

SAALR TWO ARRIVAL (RNAV)

(SAALR.SAALR2) 23SEP10

SAN JUAN, PUERTO RICO
LUIS MUNOZ MARIN INTL

SE-3, 21 MAY 2020 to 18 JUN 2020

SE-3, 21 MAY 2020 to 18 JUN 2020