

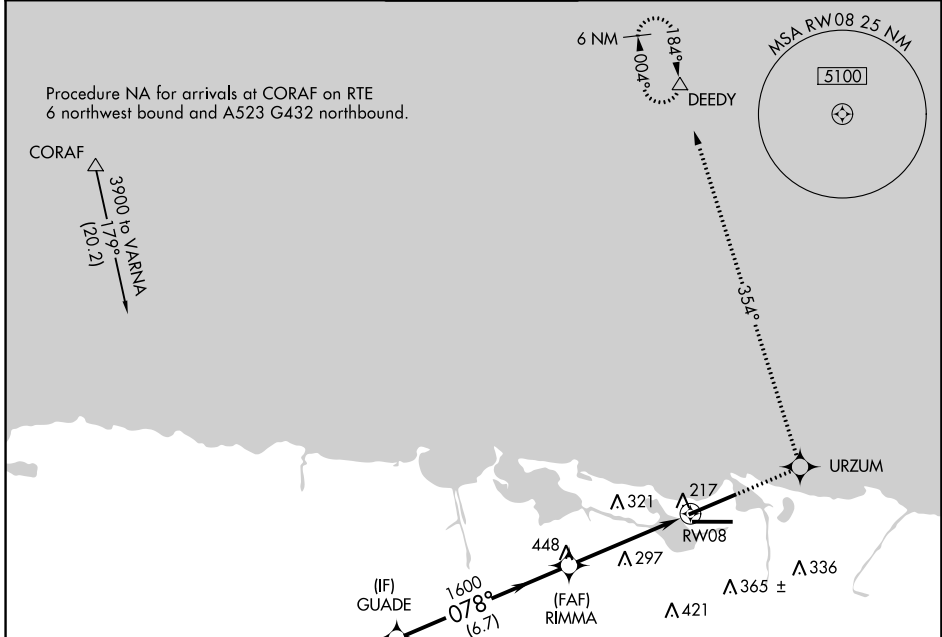
APP CRS	Rwy Idg	<b>9384</b>
<b>078°</b>	TDZE	<b>9</b>
	Apt Elev	<b>9</b>

# RNAV (GPS) RWY 8

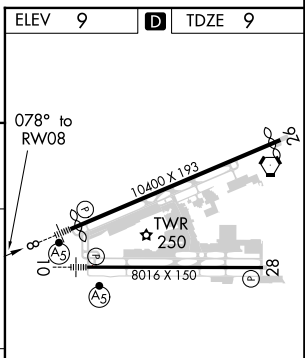
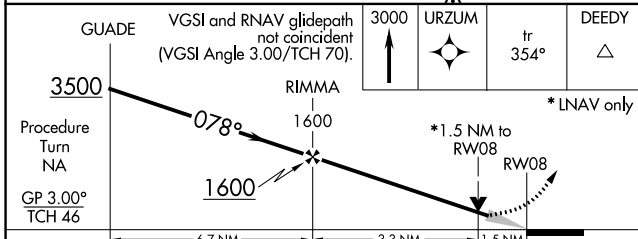
LUIS MUNOZ MARIN INTL (SJU)(TJSJ)

<b>T</b>	WAAS VNAV NA. For uncompensated Baro-VNAV systems, LNAV/VNAV NA below -15°C (5°F) or above 48°C (118°F). DME/DME RNP-0.3 NA.	MALSRL	MISSED APPROACH: Climb to 3000 direct URZUM and on track 354° to DEEDY and hold.
----------	--	--------	--

D-ATIS	SAN JUAN APP CON	SAN JUAN TOWER	GND CON	CLNC DEL	CPDLC
<b>125.8</b>	<b>119.4 269.2</b> (WEST & SW) <b>120.9 290.2</b> (NORTH & EAST)	<b>132.05 257.8</b>	<b>121.9 348.6</b>	<b>126.4 284.6</b>	



ELEV	9	<b>D</b>	TDZE	9
------	---	----------	------	---



CATEGORY	A	B	C	D
LNAV/VNAV DA	530-1¼ 521 (600-1¼)			
LNAV MDA	560-½ 551 (600-½)	560-1 551 (600-1)		560-1¼ 551 (600-1¼)
CIRCLING	600-1 591 (600-1)	600-1½ 591 (600-1½)		600-2 591 (600-2)

REIL Rwy 26  
HIRL Rwy 8-26 and 10-28

SE-3, 21 MAY 2020 to 18 JUN 2020

SE-3, 21 MAY 2020 to 18 JUN 2020