

17173

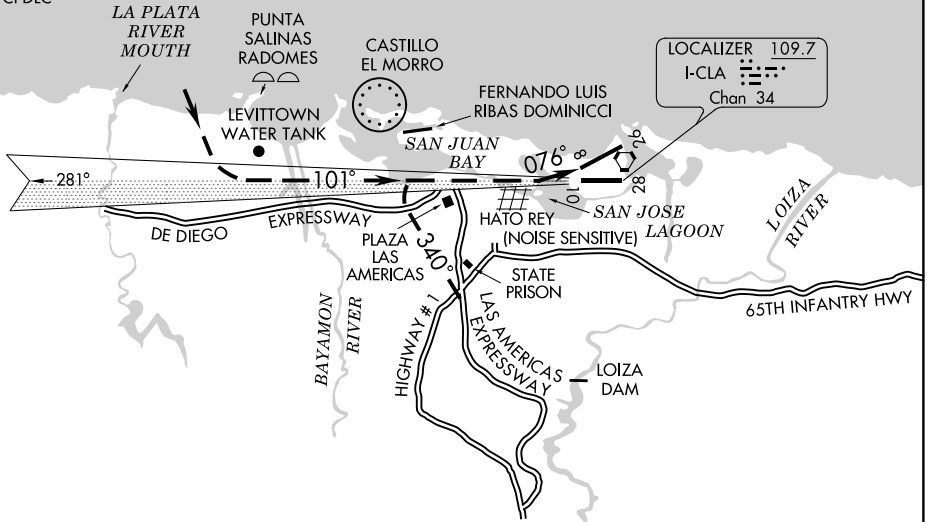
LAGOON VISUAL RWY 8

AL-784 (FAA)

LUIS MUNOZ MARIN INTL (SJU)(TJSJ)
SAN JUAN, PUERTO RICO

D-ATIS 125.8
 SAN JUAN APP CON
 119.4 269.2 (WEST & SW)
 120.9 290.2 (NORTH & EAST)
 SAN JUAN TOWER
 132.05 257.8
 GND CON
 121.9 348.6
 CLNC DEL
 126.4 284.6
 CPDLC

RADAR REQUIRED



Vertical Guidance Navaid
 and Angle
 VASI Rwy 8 (3.00°)

Weather Minima: 2000 foot
 ceiling and 5 mile visibility.

NOTE: Chart not to scale.

LAGOON VISUAL APPROACH RUNWAY 8 PROCEDURE NOT AUTHORIZED AT NIGHT

When cleared for the Lagoon Visual Runway 8 Approach aircraft will proceed visually to intercept and fly the Runway 10 final approach course until the west end of the San Jose Lagoon, then make left turn to land Runway 8.

LAGOON VISUAL RWY 8

Amdt 1 27MAY93

SAN JUAN, PUERTO RICO
LUIS MUNOZ MARIN INTL (SJU)(TJSJ)

SE-3, 21 MAY 2020 to 18 JUN 2020

SE-3, 21 MAY 2020 to 18 JUN 2020