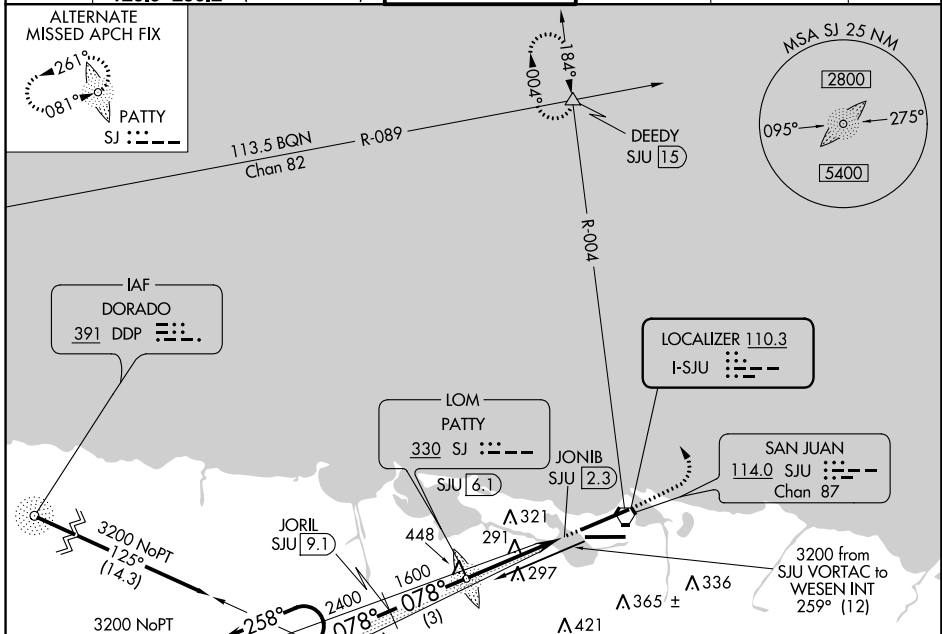


LOC I-SJU 110.3	APP CRS 078°	Rwy Idg 9384
		TDZE 9
		Apt Elev 9

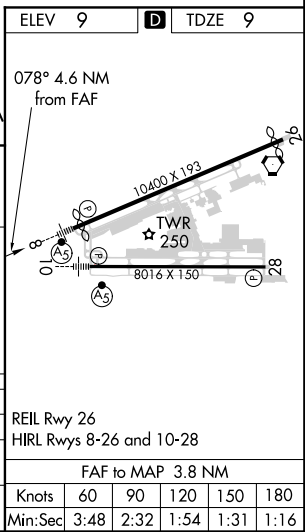
ILS or LOC RWY 8

LUIS MUNOZ MARIN INTL (SJU)(TJSJ)

For inoperative MALSR, increase S-ILS 8 all Cats visibility to 1 mile. DME Required.		MALSR 	MISSED APPROACH: Climb to 2000 then climbing left turn to 3000 on heading 320° and SJU VORTAC R-004 to DEEDY Int/SJU 15 DME and hold.			
D-ATIS 125.8	SAN JUAN APP CON 119.4 269.2 (WEST & SW) 120.9 290.2 (NORTH & EAST)		SAN JUAN TOWER 132.05 257.8	GND CON 121.9 348.6	CLNC DEL 126.4 284.6	CPDLC



One Minute Holding Pattern WESEN INT SJU [12]	JORIL SJU [9.1]	PATTY LOM	ILS unusable 0.8 NM from threshold inbound.
3200 ← 258°	← 078°	← 078°	
GS 3.00° TCH 46	2400	1541	
VGSI and ILS glidepath not coincident (VGSI Angle 3.00/TCH 70).	1600		
	2.9 NM	3 NM	3.8 NM
CATEGORY	A	B	C
S- ILS-8	311-1/2		302 (400-1/2)
S- LOC-8	560-1/2	551 (600-1/2)	560-1 551 (600-1) 560-1 1/4 551 (600-1/4)
CIRCLING	600-1	591 (600-1)	600-1 1/2 591 (600-1/2) 600-2 591 (600-2)



SE-3, 21 MAY 2020 to 18 JUN 2020

SE-3, 21 MAY 2020 to 18 JUN 2020