

# CHAKA FOUR ARRIVAL (RNAV)

SE-3, 21 MAY 2020 to 18 JUN 2020

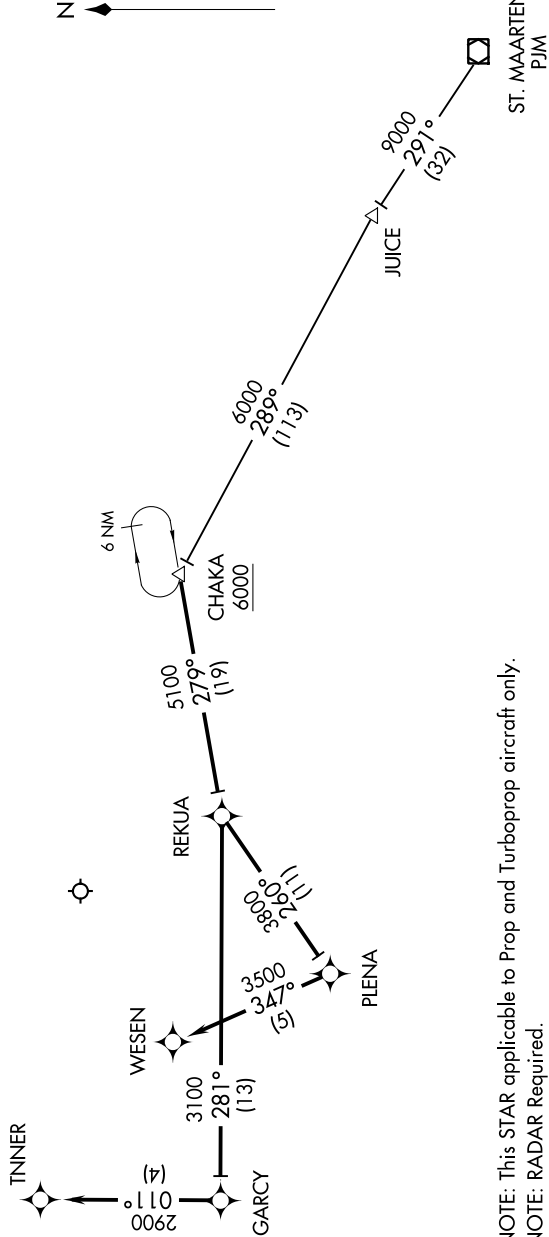
## ARRIVAL ROUTE DESCRIPTION

### ST MAARTEN TRANSITION (PJM.CHAKA4):

Landing East Rwy 08: From CHAKA on track 279° to REKUA, then on track 260° to PLENA, then on track 347° to WESEN.

Landing East Rwy 10: From CHAKA on track 279° to REKUA, then on track 281° to GARCY, then on track 011° to TNNER.

SAN JUAN APP CON  
(West & Southwest)  
119.4 269.2  
(North & East)  
120.9 290.2  
D-AIS  
125.8



NOTE: Chart not to scale.

NOTE: This STAR applicable to Prop and Turboprop aircraft only.  
NOTE: RADAR Required.  
NOTE: GPS Required.  
NOTE: RNAV 1.

# CHAKA FOUR ARRIVAL (RNAV)

(CHAKA.CHAKA4) 13JAN11

SE-3, 21 MAY 2020 to 18 JUN 2020