

WILDCAT FIVE DEPARTURE

AL-780 (FAA)

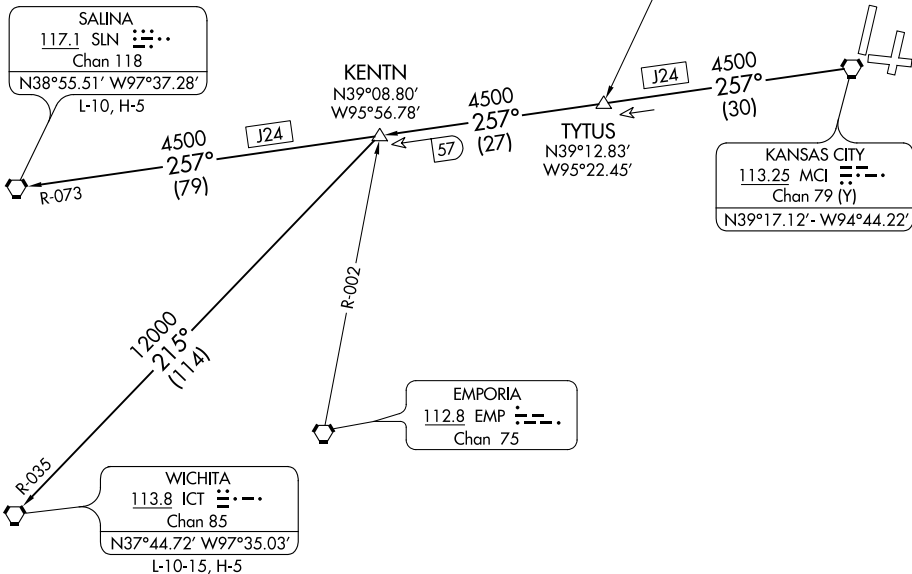
KANSAS CITY INTL (MCI)
KANSAS CITY, MISSOURI

D-ATIS
128.375
CLNC DEL
135.7
CPDLC
KANSAS CITY DEP CON
124.7 284.7

TAKEOFF MINIMUMS

Rwys 1L, 1R, 9, 19R, 19L, 27: Standard.

NOTE: RADAR required.



NC-3, 21 MAY 2020 to 18 JUN 2020

NC-3, 21 MAY 2020 to 18 JUN 2020

NOTE: Chart not to scale.



DEPARTURE ROUTE DESCRIPTION

TAKEOFF ALL RUNWAYS: Climb on assigned heading for RADAR vectors to appropriate route. Expect filed altitude 10 minutes after departure.

KENTN TRANSITION (WLDCT5.KENTN): From over MCI VORTAC on MCI R-257 to KENTN.

SALINA TRANSITION (WLDCT5.SLN): From over MCI VORTAC on MCI R-257 and SLN R-073 to SLN VORTAC.

WICHITA TRANSITION (WLDCT5.ICT): From over MCI VORTAC on MCI R-257 to KENTN, then on ICT R-035 to ICT VORTAC.

WILDCAT FIVE DEPARTURE

(WLDCT5.MCI) 01FEB18

KANSAS CITY, MISSOURI
KANSAS CITY INTL (MCI)