

WAAS CH <b>42808</b> <b>W01B</b>	APP CRS <b>011°</b>	Rwy ldg <b>10801</b> TDZE <b>1014</b> Apt Elev <b>1027</b>
--	------------------------	--

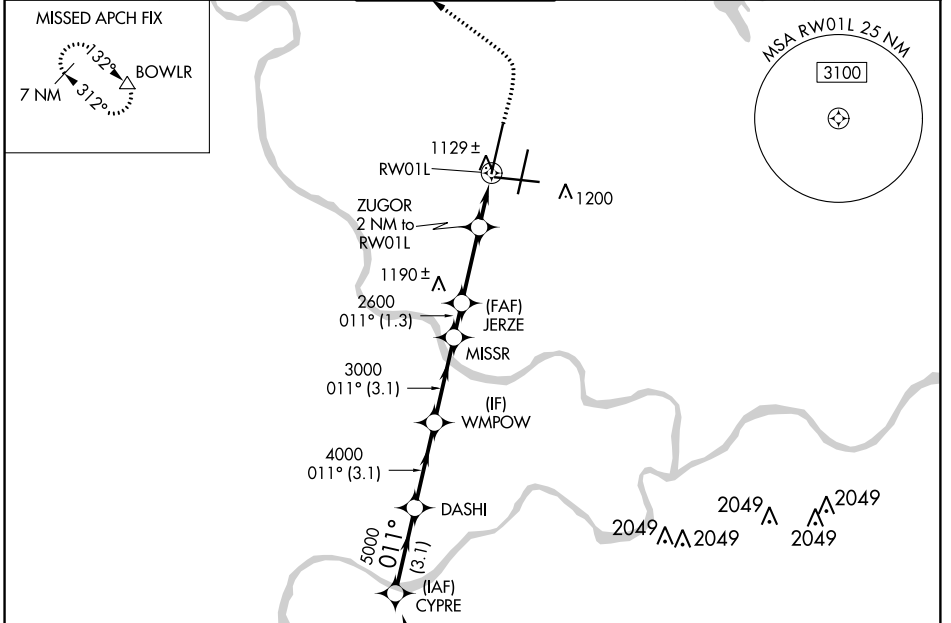
# RNAV (GPS) Y RWY 1L

KANSAS CITY INTL (MCI)

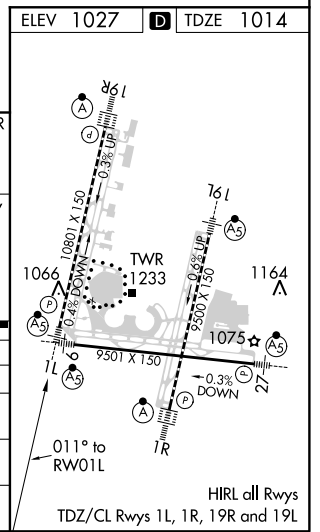
For uncompensated Baro-VNAV systems, LNAV/VNAV NA below -18°C (0°F) or above 54°C (130°F). Simultaneous approach authorized. Use of FD or AP providing RNAV track guidance required during simultaneous operations. LNAV procedure NA during simultaneous operations. DME/DME RNP-0.3 NA. For inop ALS, increase LNAV Cat C/D visibility to RVR 5500.

**MALSR**  
MISSED APPROACH: Climb to 2000 then climbing left turn to 4000 direct BOWLR and hold.

D-ATIS <b>128.375</b>	KANSAS CITY APP CON <b>120.95 318.1</b>	INTERNATIONAL TOWER <b>128.2 254.25</b>	GND CON <b>121.8</b>	CLNC DEL <b>135.7</b>	CPDLC
--------------------------	--	--	-------------------------	--------------------------	-------



CYPRE		DASHI		WPMOW		MISSR		JERZE		ZUGOR		RW01L		RW01L		
6000		5000		4000		3000		2600		2000		2000		4000		
GP 3.00° TCH 57		011°		011°		011°		011°		011°		011°		011°		
-3.1 NM		-3.1 NM		-3.1 NM		-1.3 NM		-2.8 NM		-1.1 NM		-0.9 NM		-0.9 NM		
CATEGORY	A		B		C		D									
LPV DA	1214/18		200 (200-½)													
LNAV/VNAV DA	1331/24		317 (400-½)													
LNAV MDA	1380/24		366 (400-½)		1380/35		366 (400-¾)									
CIRCLING	1540-1		513 (600-1)		1540-1½		513 (600-1½)		1580-2		553 (600-2)					



NC-3, 21 MAY 2020 to 18 JUN 2020

NC-3, 21 MAY 2020 to 18 JUN 2020