

APP CRS	Rwy Idg	9500
011°	TDZE	1017
	Apt Elev	1026

RNAV (RNP) Z RWY 1R

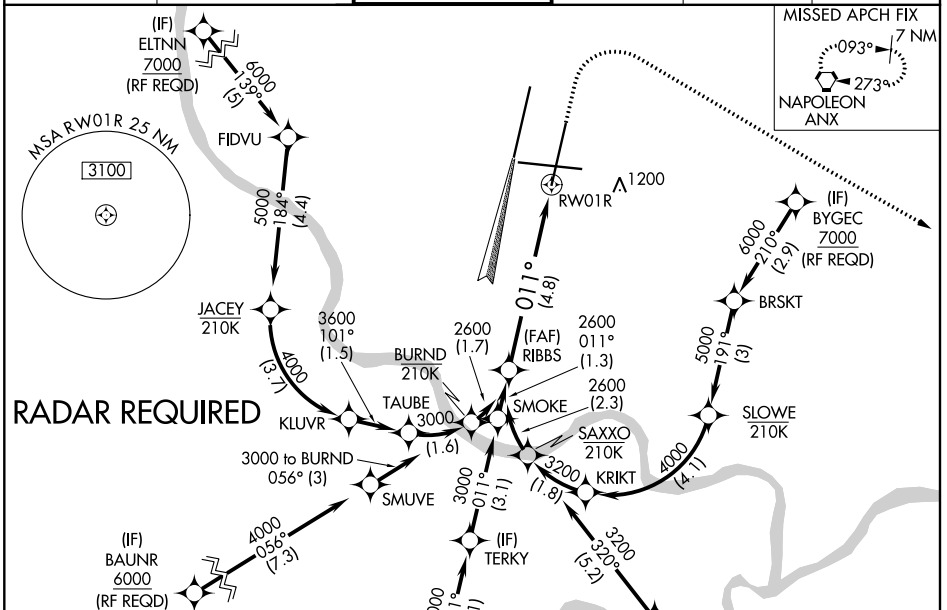
KANSAS CITY INTL (MCI)

For uncompensated Baro-VNAV systems, procedure NA below -20°C (-4°F) or above 54°C (130°F). For inop ALSF, increase RNP 0.30 visibility to RVR 5000. GPS required. Simultaneous approach authorized with Rwy 1L, except for arrivals at BYGEC, COOKD, BAUNR, and ELTNN. Use of FD or AP providing RNAV track guidance required during simultaneous operations.

ALSF-2

MISSED APPROACH: Climb to 1500 then climbing right turn to 4000 direct ANX VORTAC and hold.

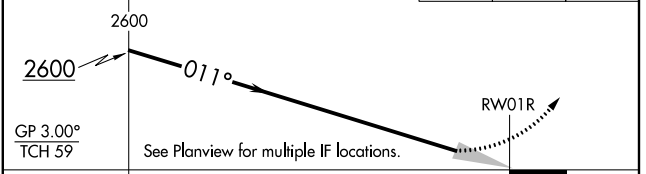
D-ATIS 128.375	KANSAS CITY APP CON 120.95 318.1	INTERNATIONAL TOWER 128.2 254.25	GND CON 121.8	CLNC DEL 135.7	CPDLC
--------------------------	--	--	-------------------------	--------------------------	-------



ELEV 1026	D	TDZE 1017
HIRL all Rwys		
TDZ/CL Rwys 1L, 1R, 19R and 19L		

VGSI and RNAV glidepath not coincident (VGSI Angle 3.00/TCH 74).

1500	4000	ANX



CATEGORY	A	B	C	D
RNP 0.30 DA		1283/24	266 (300-1/2)	

AUTHORIZATION REQUIRED

NC-3, 21 MAY 2020 to 18 JUN 2020

NC-3, 21 MAY 2020 to 18 JUN 2020