

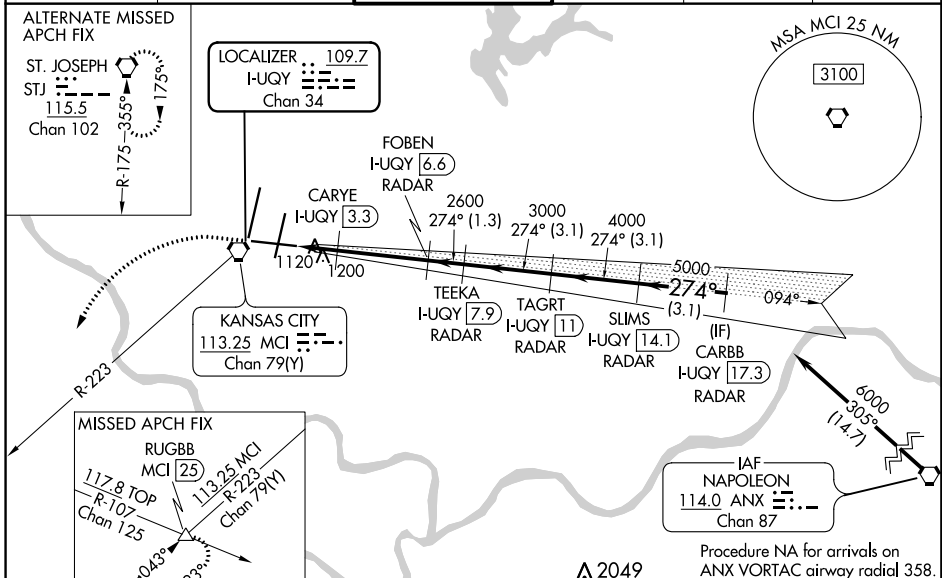
LOC/DME I-QUY 109.7 Chan 34	APP CRS 274°	Rwy Idg TDZE Apt Elev	9501 1027 1027
--	------------------------	-----------------------------	---

ILS or LOC RWY 27

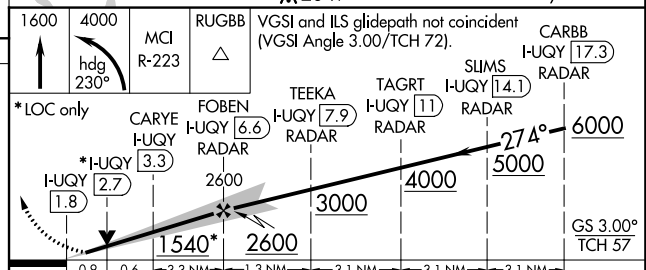
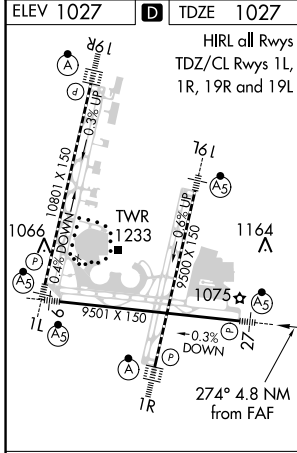
KANSAS CITY INTL (MCI)

DME or RADAR required.	MALSR 	MISSED APPROACH: Climb to 1600 then climbing left turn to 4000 on heading 230° and MCI VORTAC R-223 to RUGBB INT/MCI 25 DME and hold.
<p>▼ For inop ALS, increase S-ILS 27 Cat E visibility to RVR 4000, S-LOC 27 Cat C/D/E visibility to 1 3/8 SM and CARYE fix minimums S-LOC 27 Cat C/D/E visibility to RVR 5500. # RVR 1800 authorized with use of FD or AP or HUD to DA.</p>		

D-ATIS 128.375	KANSAS CITY APP CON 120.95 318.1	INTERNATIONAL TOWER 128.2 254.25	GND CON 121.8	CLNC DEL 135.7	CPDLC
--------------------------	--	--	-------------------------	--------------------------	-------



ELEV 1027	TDZE 1027
-----------	-----------



CATEGORY	A	B	C	D	E
S-ILS 27#	1227/24 200 (200-1/2)				
S-LOC 27	1540/24	513 (600-1/2)	1540/55 513 (600-1)		
C CIRCLING	1540-1	513 (600-1)	1540-1 1/2 513 (600-1 1/2)	1580-2	553 (600-2)
CARYE FIX MINIMUMS					
S-LOC 27	1380/24	353 (400-1/2)	1380/30 353 (400-3/8)		
C CIRCLING	1540-1	513 (600-1)	1540-1 1/2 513 (600-1 1/2)	1580-2	553 (600-2)

FAF to MAP 4.8 NM					
Knots	60	90	120	150	180
Min:Sec	4:48	3:12	2:24	1:55	1:36

NC-3, 21 MAY 2020 to 18 JUN 2020

NC-3, 21 MAY 2020 to 18 JUN 2020