

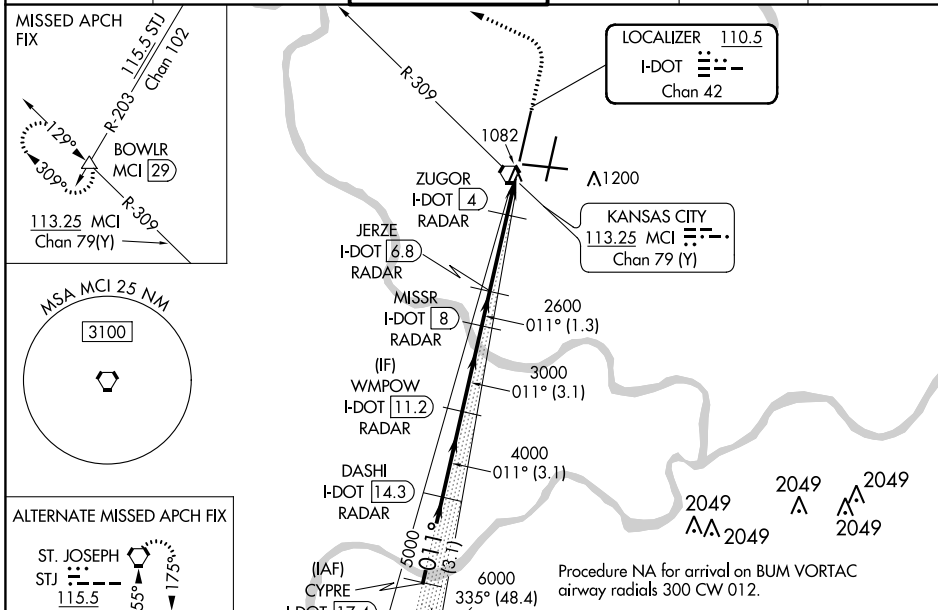
LOC/DME I-DOT <b>110.5</b> Chan <b>42</b>	APP CRS <b>011°</b>	Rwy Idg TDZE Apt Elev	<b>10801</b> <b>1014</b> <b>1027</b>
---	------------------------	-----------------------------	--

# ILS or LOC RWY 1L

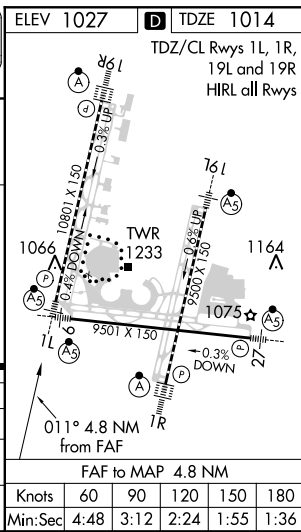
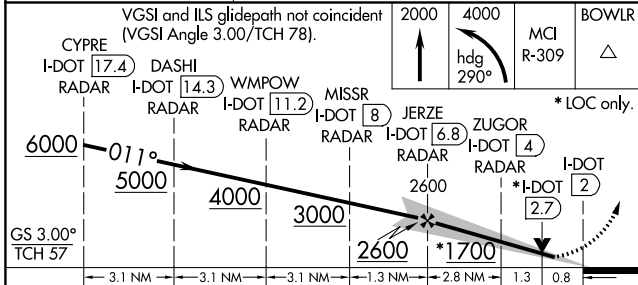
KANSAS CITY INTL (MCI)

DME or RADAR required.		MALS R	MISSED APPROACH: Climb to 2000 then climbing left turn to 4000 on heading 290° and MCI VORTAC R-309 to BOWLR INT/MCI 29 DME and hold.		
<p>Simultaneous approach authorized. For inop ALS, increase S-ILS 1L Cat E visibility to RVR 4000 and S-LOC 1L Cat E visibility to RVR 5000.</p>					

D-ATIS <b>128.375</b>	KANSAS CITY APP CON <b>120.95 318.1</b>	INTERNATIONAL TOWER <b>128.2 254.25</b>	GND CON <b>121.8</b>	CLNC DEL <b>135.7</b>	CPDLC
--------------------------	--	--	-------------------------	--------------------------	-------



ELEV 1027	TDZE 1014
TDZ/CL Rwy 1L, 1R, 19L and 19R HIRL all Rwys	



CATEGORY	A	B	C	D	E
S-ILS 1L	1214/18 200 (200-½)				
S-LOC 1L	1340/24	326 (400-½)	1340/26 326 (400-½)		
CIRCLING	1540-1 513 (600-1)	1540-1½ 513 (600-1½)		1580-2 553 (600-2)	

NC-3, 21 MAY 2020 to 18 JUN 2020

NC-3, 21 MAY 2020 to 18 JUN 2020