

LOC/DME I-PVL 110.75 Chan 44 (Y)	APP CRS 011°	Rwy Idg TDZE Apt Elev 9500 1017 1026
---	------------------------	--

ILS RWY 1R (SA CAT I)

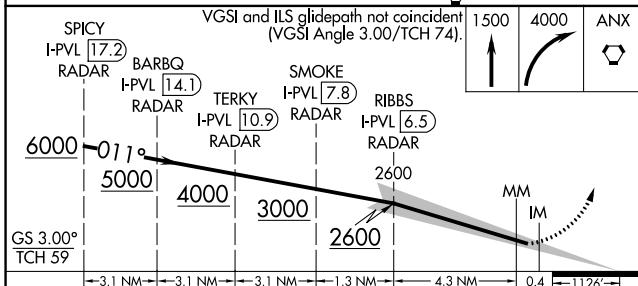
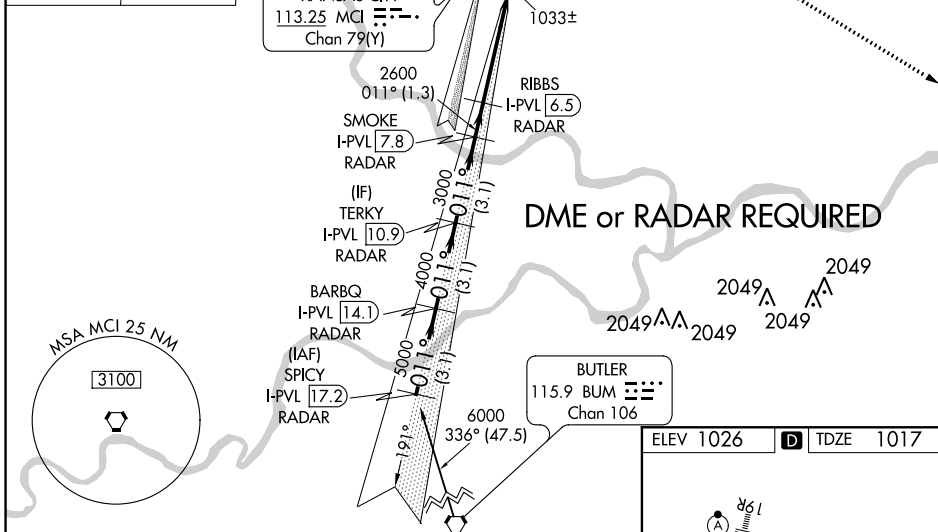
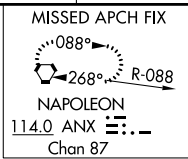
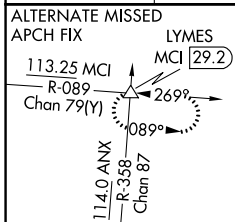
KANSAS CITY INTL (MCI)

Simultaneous approach authorized with Rwy 1L. DME or RADAR required. Requires specific OPSPEC, MSPEC, or LOA approval and use of HUD to DH.

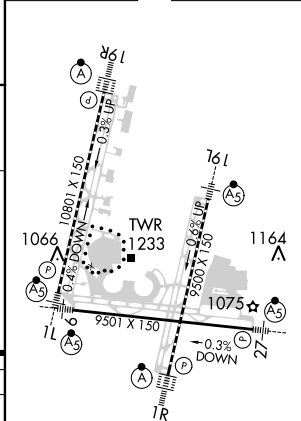


MISSED APPROACH: Climb to 1500 then climbing right turn to 4000 direct ANX VORTAC and hold.

D-ATIS 128.375	KANSAS CITY APP CON 120.95 318.1	INTERNATIONAL TOWER 128.2 254.25	GND CON 121.8	CLNC DEL 135.7	CPDLC
--------------------------	--	--	-------------------------	--------------------------	-------



ELEV 1026	D TDZE 1017
-----------	--------------------



CATEGORY	A	B	C	D
S-ILS 1R	RA 161/14 150 DA 1167			

SA CATEGORY I ILS - SPECIAL AIRCREW & AIRCRAFT CERTIFICATION REQUIRED

HIRL all Rwys
TDZ/CL Rwys 1L, 1R, 19L and 19R

NC-3, 21 MAY 2020 to 18 JUN 2020

NC-3, 21 MAY 2020 to 18 JUN 2020